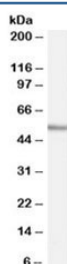


## WIPF1 Antibody / WASP-interacting protein (R34505)

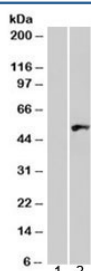
Catalog No.	Formulation	Size
R34505-100UG	0.5 mg/ml in 1X TBS, pH7.3, with 0.5% BSA (US sourced) and 0.02% sodium azide	100 ug

[Bulk quote request](#)

Availability	1-3 business days
Species Reactivity	Human
Predicted Reactivity	Mouse, Rat, Dog
Format	Antigen affinity purified
Clonality	Polyclonal (goat origin)
Isotype	Goat Ig
Purity	Antigen affinity
Gene ID	7456
Applications	Western Blot : 0.03-0.1ug/ml ELISA (peptide) LOD : 1:64000
Limitations	This WIPF1 antibody is available for research use only.



Western blot testing of human tonsil lysate with WIPF1 antibody at 0.03ug/ml.  
Commonly observed molecular weight: 50-55 kDa with a possible ~36 kDa isoform.



Western blot of HEK293 lysate overexpressing WIPF1 probed with WIPF1 antibody (mock transfection in lane 1). Commonly observed molecular weight: 50-55 kDa with a possible ~36 kDa isoform.

## Description

Additional name(s) for this target protein: WAS/WASL interacting protein family, member 1

## Application Notes

Optimal dilution of the WIPF1 antibody should be determined by the researcher.

## Immunogen

Amino acids KLARNESRSGSNRRE were used as the immunogen for this WIPF1 antibody.

## Storage

Aliquot and store the WIPF1 antibody at -20oC.