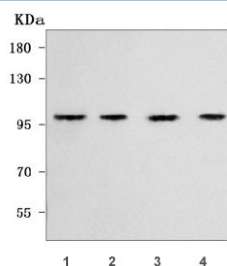


WFS1 Antibody / Wolframin (RQ7878)

Catalog No.	Formulation	Size
RQ7878	0.5mg/ml if reconstituted with 0.2ml sterile DI water	100 ug

Bulk quote request

Availability	1-3 business days
Species Reactivity	Human
Format	Antigen affinity purified
Clonality	Polyclonal (rabbit origin)
Isotype	Rabbit IgG
Purity	Antigen affinity purified
Buffer	Lyophilized from 1X PBS with 2% Trehalose
UniProt	O76024
Applications	Western Blot : 0.5-1ug/ml Direct ELISA : 0.1-0.5ug/ml
Limitations	This WFS1 antibody is available for research use only.



Western blot testing of human 1) HepG2, 2) RT4, 3) PC-3 and 4) A549 cell lysate with WFS1 antibody. Predicted molecular weight ~100 kDa.

Description

Wolframin is a protein that in humans is encoded by the WFS1 gene. This gene encodes a transmembrane protein, which is located primarily in the endoplasmic reticulum and ubiquitously expressed with highest levels in brain, pancreas, heart, and insulinoma beta-cell lines. Mutations in this gene are associated with Wolfram syndrome, also called DIDMOAD (Diabetes Insipidus, Diabetes Mellitus, Optic Atrophy, and Deafness), an autosomal recessive disorder. The disease affects the brain and central nervous system. Mutations in this gene can also cause autosomal dominant deafness 6 (DFNA6), also known as DFNA14 or DFNA38. Alternatively spliced transcript variants have been found for this gene.

Application Notes

Optimal dilution of the WFS1 antibody should be determined by the researcher.

Immunogen

E. coli-derived recombinant human protein (amino acids D272-K876) was used as the immunogen for the WFS1 antibody.

Storage

After reconstitution, the WFS1 antibody can be stored for up to one month at 4oC. For long-term, aliquot and store at -20oC. Avoid repeated freezing and thawing.