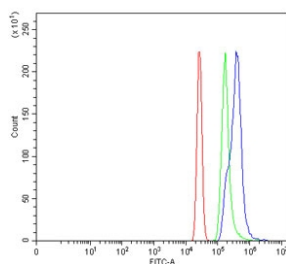


WDR46 Antibody / BING4 (RQ7402)

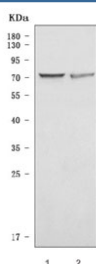
Catalog No.	Formulation	Size
RQ7402	0.5mg/ml if reconstituted with 0.2ml sterile DI water	100 ug

Bulk quote request

Availability	1-3 business days
Species Reactivity	Human
Format	Antigen affinity purified
Clonality	Polyclonal (rabbit origin)
Isotype	Rabbit IgG
Purity	Antigen affinity purified
Buffer	Lyophilized from 1X PBS with 2% Trehalose
UniProt	O15213
Applications	Western Blot : 0.5-1ug/ml Flow Cytometry : 1-3ug/million cells Direct ELISA : 0.1-0.5ug/ml
Limitations	This WDR46 antibody is available for research use only.



Flow cytometry testing of human HL60 cells with WDR46 antibody at 1 ug/million cells (blocked with goat sera); Red=cells alone, Green=isotype control, Blue= WDR46 antibody.



Western blot testing of human 1) HeLa and 2) HEL cell lysate with WDR46 antibody. Predicted molecular weight ~68 kDa.

Description

WD repeat-containing protein 46 is a protein that in humans is encoded by the WDR46 gene. Enables RNA binding activity. Predicted to be involved in maturation of SSU-rRNA from tricistronic rRNA transcript (SSU-rRNA, 5.8S rRNA, LSU-rRNA). Predicted to be located in nucleoplasm. Predicted to be part of small-subunit processome. Predicted to be active in nucleolus.

Application Notes

Optimal dilution of the WDR46 antibody should be determined by the researcher.

Immunogen

Recombinant human protein (amino acids E166-K495) was used as the immunogen for the WDR46 antibody.

Storage

After reconstitution, the WDR46 antibody can be stored for up to one month at 4oC. For long-term, aliquot and store at -20oC. Avoid repeated freezing and thawing.