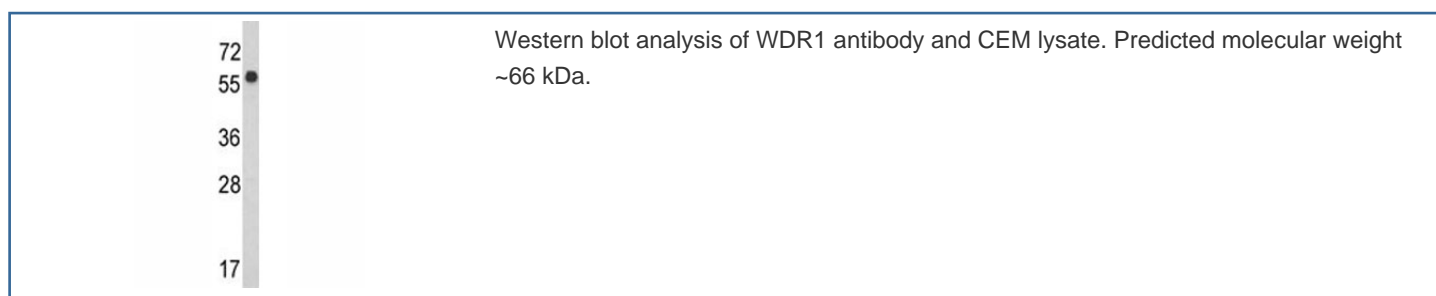


WDR1 Antibody (F48322)

Catalog No.	Formulation	Size
F48322-0.4ML	In 1X PBS, pH 7.4, with 0.09% sodium azide	0.4 ml
F48322-0.08ML	In 1X PBS, pH 7.4, with 0.09% sodium azide	0.08 ml

Bulk quote request

Availability	1-3 business days
Species Reactivity	Human
Predicted Reactivity	Bovine
Format	Purified
Clonality	Polyclonal (rabbit origin)
Isotype	Rabbit Ig
Purity	Purified
UniProt	O75083
Applications	Western Blot : 1:1000
Limitations	This WDR1 antibody is available for research use only.



Description

WDR1 is a protein containing 9 WD repeats. WD repeats are approximately 30- to 40-amino acid domains containing several conserved residues, mostly including a trp-asn at the C-terminal end. WD domains are involved in protein-protein interactions. This protein may help induce the disassembly of actin filaments.

Application Notes

Titration of the WDR1 antibody may be required due to differences in protocols and secondary/substrate sensitivity.

Immunogen

A portion of amino acids 548-577 from the human protein was used as the immunogen for this WDR1 antibody.

Storage

Aliquot the WDR1 antibody and store frozen at -20oC or colder. Avoid repeated freeze-thaw cycles.