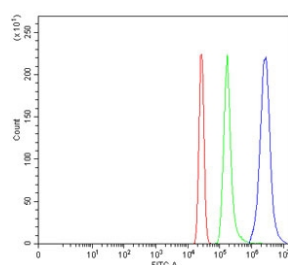


WDFY1 Antibody / FENS1 (RQ7395)

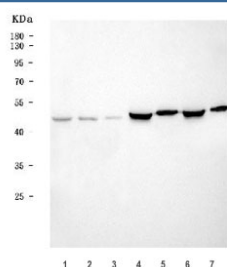
Catalog No.	Formulation	Size
RQ7395	0.5mg/ml if reconstituted with 0.2ml sterile DI water	100 ug

Bulk quote request

Availability	1-3 business days
Species Reactivity	Human, Mouse, Rat
Format	Antigen affinity purified
Clonality	Polyclonal (rabbit origin)
Isotype	Rabbit IgG
Purity	Antigen affinity purified
Buffer	Lyophilized from 1X PBS with 2% Trehalose
UniProt	Q8IWB7
Applications	Western Blot : 0.5-1ug/ml Flow Cytometry : 1-3ug/million cells Direct ELISA : 0.1-0.5ug/ml
Limitations	This WDFY1 antibody is available for research use only.



Flow cytometry testing of human HL60 cells with WDFY1 antibody at 1ug/million cells (blocked with goat sera); Red=cells alone, Green=isotype control, Blue= WDFY1 antibody.



Western blot testing of 1) human U-87 MG, 2) RT4, 3) ThP-1, 4) rat brain, 5) rat skeletal muscle, 6) mouse brain and 7) mouse skeletal muscle tissue lysate with WDFY1 antibody. Predicted molecular weight ~46 kDa.

Description

WD repeat and FYVE domain-containing protein 1 (WDFY1), also called FYVE domain-containing protein localized to endosomes 1 (FENS1), is a phosphatidylinositol 3-phosphate binding protein which contains a FYVE zinc finger domain and multiple WD-40 repeat domains. When exogenously expressed, it localizes to early endosomes. Mutagenesis analysis demonstrates that this endosomal localization is mediated by the FYVE domain.

Application Notes

Optimal dilution of the WDFY1 antibody should be determined by the researcher.

Immunogen

Recombinant human protein (amino acids H65-D394) was used as the immunogen for the WDFY1 antibody.

Storage

After reconstitution, the WDFY1 antibody can be stored for up to one month at 4°C. For long-term, aliquot and store at -20°C. Avoid repeated freezing and thawing.