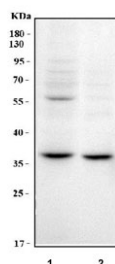


WD repeat-containing protein 5 Antibody / WDR5 (RQ8526)

| Catalog No. | Formulation | Size |
|-------------|---|--------|
| RQ8526 | 0.5mg/ml if reconstituted with 0.2ml sterile DI water | 100 ug |

Bulk quote request

| | |
|---------------------------|--|
| Availability | 1-3 days |
| Species Reactivity | Human |
| Format | Antigen affinity purified |
| Clonality | Polyclonal (rabbit origin) |
| Isotype | Rabbit IgG |
| Purity | Antigen affinity purified |
| Buffer | Lyophilized from 1X PBS with 2% Trehalose |
| UniProt | P61964 |
| Applications | Western Blot : 0.5-1ug/ml ELISA : 0.1-0.5ug/ml |
| Limitations | This WD repeat-containing protein 5 antibody is available for research use only. |



Western blot testing of human 1) 293T and 2) Jurkat cell lysate with WD repeat-containing protein 5 antibody. Predicted molecular weight ~36 kDa.

Description

WD repeat-containing protein 5 is a protein that in humans is encoded by the WDR5 gene. This gene encodes a member of the WD repeat protein family. WD repeats are minimally conserved regions of approximately 40 amino acids typically bracketed by gly-his and trp-asn (GH-WD), which may facilitate formation of heterotrimeric or multiprotein complexes. Members of this family are involved in a variety of cellular processes, including cell cycle progression, signal transduction, apoptosis, and gene regulation. This protein contains 7 WD repeats. Alternatively spliced transcript variants encoding the same protein have been identified.

Application Notes

Optimal dilution of the WD repeat-containing protein 5 antibody should be determined by the researcher.

Immunogen

An E.coli-derived human recombinant protein (amino acids Q25-D324) was used as the immunogen for the WD repeat-containing protein 5 antibody.

Storage

After reconstitution, the WD repeat-containing protein 5 antibody can be stored for up to one month at 4oC. For long-term, aliquot and store at -20oC. Avoid repeated freezing and thawing.