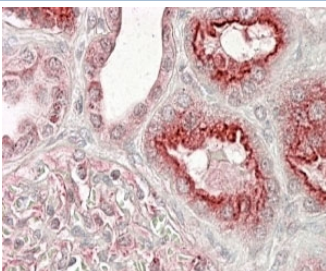


VPS11 Antibody (R34159)

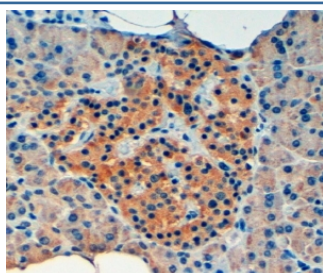
Catalog No.	Formulation	Size
R34159-100UG	0.5 mg/ml in 1X TBS, pH7.3, with 0.5% BSA (US sourced) and 0.02% sodium azide	100 ug

[Bulk quote request](#)

Availability	1-3 business days
Species Reactivity	Human
Predicted Reactivity	Cow, Dog, Mouse, Rat
Format	Antigen affinity purified
Clonality	Polyclonal (goat origin)
Isotype	Goat Ig
Purity	Antigen affinity
Gene ID	55823
Applications	Immunohistochemistry (FFPE) : 3-6ug/ml ELISA (peptide) LOD : 1:32000
Limitations	This VPS11 antibody is available for research use only.



IHC testing of FFPE human kidney with VSP11 antibody at 4ug/ml. HIER: steamed with pH6 citrate buffer, AP-staining.



IHC staining of FFPE human pancreas with VPS11 antibody at 4ug/ml. HIER: steamed with pH9 Tris/EDTA buffer, HRP-staining.

Description

Additional name(s) for this target protein: Vacuolar protein sorting 11, RNF108

Application Notes

Optimal dilution of the VPS11 antibody should be determined by the researcher.

Immunogen

Amino acids HALQEKDTQTKLE were used as the immunogen for this VPS11 antibody.

Storage

Aliquot and store the VPS11 antibody at -20oC.