

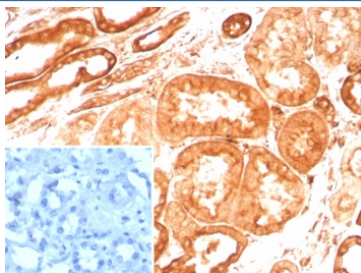
## Vinculin Antibody [clone VCL/8533R] (V4104)

Catalog No.	Formulation	Size
V4104-100UG	0.2 mg/ml in 1X PBS with 0.1 mg/ml BSA (US sourced), 0.05% sodium azide	100 ug
V4104-20UG	0.2 mg/ml in 1X PBS with 0.1 mg/ml BSA (US sourced), 0.05% sodium azide	20 ug
V4104SAF-100UG	1 mg/ml in 1X PBS; BSA free, sodium azide free	100 ug

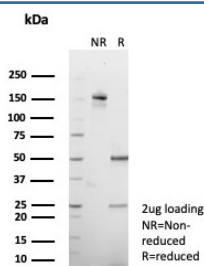
Recombinant **RABBIT MONOCLONAL**

[Bulk quote request](#)

<b>Availability</b>	1-3 business days
<b>Species Reactivity</b>	Human
<b>Format</b>	Purified
<b>Clonality</b>	Recombinant Rabbit Monoclonal
<b>Isotype</b>	Rabbit IgG, kappa
<b>Clone Name</b>	VCL/8533R
<b>Purity</b>	Protein A/G affinity
<b>UniProt</b>	P18206
<b>Localization</b>	Cytoplasm
<b>Applications</b>	Western Blot : 1-2ug/ml Immunohistochemistry (FFPE) : 1-2ug/ml for 30 minutes at RT
<b>Limitations</b>	This Vinculin antibody is available for research use only.



IHC staining of FFPE human kidney tissue with Vinculin antibody (clone VCL/8533R) at 2ug/ml. Inset: PBS used in place of primary Ab (secondary Ab negative control). HIER: boil tissue sections in pH 9 10mM Tris with 1mM EDTA for 20 min and allow to cool before testing.



SDS-PAGE analysis of purified, BSA-free Vinculin antibody (clone VCL/8533R) as confirmation of integrity and purity.

## Description

Focal adhesions are identified as areas within the plasma membrane of tissue culture cells that adhere tightly to the underlying substrate. In vivo, these regions are involved in the adhesion of cells to the extracellular matrix. Paxillin and vinculin are cytoskeletal, focal adhesion proteins that are components of a protein complex which links the Actin network to the plasma membrane. Vinculin binding sites have been identified on other cytoskeletal proteins, including Talin and Alpha-Actinin. In addition, vinculin, Talin and Alpha-Actinin each contain Actin binding sites. Expression of vinculin and Talin have been shown to be affected by the level of Actin expression. Alpha-Actinin has been shown to link Actin to integrins in the plasma membrane through interactions with the vinculin and Talin complex or by a direct interaction with integrin.

## Application Notes

Optimal dilution of the Vinculin antibody should be determined by the researcher.

## Immunogen

A recombinant partial protein (within amino acids 174-322) from the human protein was used as the immunogen for the Vinculin antibody.

## Storage

Aliquot the Vinculin antibody and store frozen at -20oC or colder. Avoid repeated freeze-thaw cycles.