

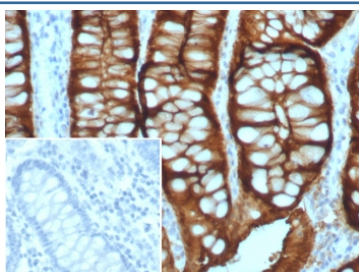
Villin Antibody / VIL1 [clone VIL1/8105R] (V4953)

Catalog No.	Formulation	Size
V4953-100UG	0.2 mg/ml in 1X PBS with 0.1 mg/ml BSA (US sourced), 0.05% sodium azide	100 ug
V4953-20UG	0.2 mg/ml in 1X PBS with 0.1 mg/ml BSA (US sourced), 0.05% sodium azide	20 ug
V4953SAF-100UG	1 mg/ml in 1X PBS; BSA free, sodium azide free	100 ug

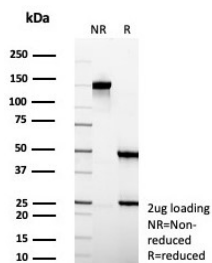
Recombinant **RABBIT MONOCLONAL**

[Bulk quote request](#)

Availability	1-3 business days
Species Reactivity	Human
Format	Purified
Clonality	Recombinant Rabbit Monoclonal
Isotype	Rabbit IgG, kappa
Clone Name	VIL1/8105R
Purity	Protein A/G affinity
UniProt	P09327
Localization	Cytoplasm, Cell Surface
Applications	Immunohistochemistry (FFPE) : 1-2ug/ml for 30 min at RT
Limitations	This Villin antibody is available for research use only.



IHC staining of FFPE human colon adenocarcinoma with Villin antibody (clone VIL1/8105R). Inset: PBS used in place of primary Ab (secondary Ab negative control).
 HIER: boil tissue sections in pH 9 10mM Tris with 1mM EDTA for 20 min and allow to cool before testing.



SDS-PAGE analysis of purified, BSA-free Villin antibody (clone VIL1/8105R) as confirmation of integrity and purity.

Description

Villin is a major constituent in the microvilli, which compose the brush border of epithelial cells forming absorptive surfaces of the intestinal and renal proximal tubular epithelia.

Application Notes

Optimal dilution of the Villin antibody should be determined by the researcher.

Immunogen

A recombinant partial protein sequence (within amino acids 600-700) from the human protein was used as the immunogen for the Villin antibody.

Storage

Aliquot the Villin antibody and store frozen at -20oC or colder. Avoid repeated freeze-thaw cycles.