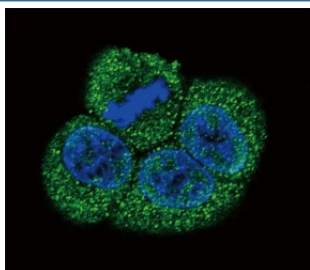


VEGFR2 Antibody (F50626)

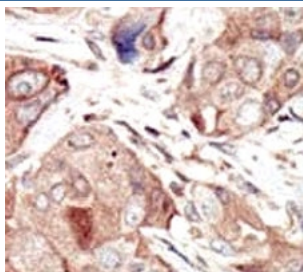
Catalog No.	Formulation	Size
F50626-0.4ML	In 1X PBS, pH 7.4, with 0.09% sodium azide	0.4 ml
F50626-0.08ML	In 1X PBS, pH 7.4, with 0.09% sodium azide	0.08 ml

[Bulk quote request](#)

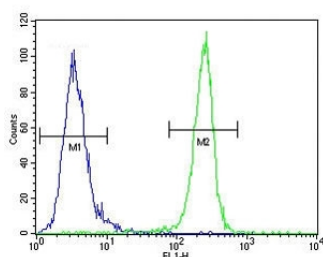
Availability	1-3 business days
Species Reactivity	Human
Format	Purified
Clonality	Polyclonal (rabbit origin)
Isotype	Rabbit Ig
Purity	Purified
UniProt	P35968
Localization	Cytoplasmic and cell surface
Applications	Western Blot : 1:1000 Immunofluorescence : 1:10-1:50 Flow Cytometry : 1:10-1:50 IHC (Paraffin) : 1:50-1:100
Limitations	This VEGFR2 antibody is available for research use only.



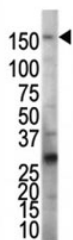
Confocal immunofluorescent analysis of VEGFR2 antibody with HeLa cells followed by Alexa Fluor 488-conjugated goat anti-rabbit IgG (green). DAPI was used as a nuclear counterstain (blue).



IHC analysis of FFPE human breast carcinoma tissue stained with the VEGFR2 antibody



VEGFR2 antibody flow cytometric analysis of MDA-MB435 cells (right histogram) compared to a negative control (left histogram). FITC-conjugated goat-anti-rabbit secondary Ab was used for the analysis.



Western blot analysis of VEGFR2 antibody and HeLa cell lysate. Predicted molecular weight: ~152 (immature), 180-200 kDa (intermediate) and 220-230 kDa (mature).

Description

KDR (FLK1) is a receptor for VEGF or VEGFC. This protein has a tyrosine-protein kinase activity. The VEGF-kinase ligand/receptor signaling system plays a key role in vascular development and regulation of vascular permeability.

Application Notes

Titration of the VEGFR2 antibody may be required due to differences in protocols and secondary/substrate sensitivity.

Immunogen

A portion of amino acids 1326-1356 from the human protein was used as the immunogen for this VEGFR2 antibody.

Storage

Aliquot the VEGFR2 antibody and store frozen at -20°C or colder. Avoid repeated freeze-thaw cycles.