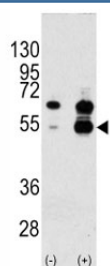


## VEGFA Antibody (F49566)

Catalog No.	Formulation	Size
F49566-0.4ML	In 1X PBS, pH 7.4, with 0.09% sodium azide	0.4 ml
F49566-0.08ML	In 1X PBS, pH 7.4, with 0.09% sodium azide	0.08 ml

**Bulk quote request**

<b>Availability</b>	1-3 business days
<b>Species Reactivity</b>	Human
<b>Format</b>	Purified
<b>Clonality</b>	Polyclonal (rabbit origin)
<b>Isotype</b>	Rabbit Ig
<b>Purity</b>	Purified
<b>UniProt</b>	P15692
<b>Applications</b>	Western Blot : 1:1000
<b>Limitations</b>	This VEGFA antibody is available for research use only.



Western blot analysis of VEGFA antibody and 293 cell lysate either nontransfected (Lane 1) or transiently transfected with the VEGFA gene (2). Expected molecular weight 19~22 kDa (monomer) and 38~44 kDa (dimer). Banding may appear larger than predicted due to glycosylation.

## Description

VEGFA is a member of the PDGF/VEGF growth factor family and is often found as a disulfide linked homodimer. This protein is a glycosylated mitogen that specifically acts on endothelial cells and has various effects, including mediating increased vascular permeability, inducing angiogenesis, vasculogenesis and endothelial cell growth, promoting cell migration, and inhibiting apoptosis. Elevated levels of this protein are linked to POEMS syndrome, also known as Crow-Fukase syndrome. Mutations in VEGFA have been associated with proliferative and nonproliferative diabetic retinopathy.

## Application Notes

Titration of the VEGFA antibody may be required due to differences in protocols and secondary/substrate sensitivity.

## **Immunogen**

A portion of amino acids 66-95 from the human protein was used as the immunogen for this VEGFA antibody.

## **Storage**

Aliquot the VEGFA antibody and store frozen at -20oC or colder. Avoid repeated freeze-thaw cycles.