

VCAM1 Antibody [clone B-K9] (V2924)

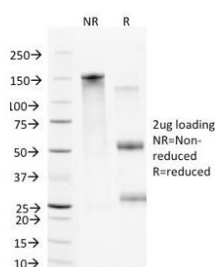
| Catalog No. | Formulation | Size |
|----------------|--|--------|
| V2924-100UG | 0.2 mg/ml in 1X PBS with 0.1 mg/ml BSA (US sourced) and 0.05% sodium azide | 100 ug |
| V2924-20UG | 0.2 mg/ml in 1X PBS with 0.1 mg/ml BSA (US sourced) and 0.05% sodium azide | 20 ug |
| V2924SAF-100UG | 1 mg/ml in 1X PBS; BSA free, sodium azide free | 100 ug |



Citations (7)

[Bulk quote request](#)

| | |
|--------------------|---|
| Availability | 1-3 business days |
| Species Reactivity | Human |
| Format | Purified |
| Clonality | Monoclonal (mouse origin) |
| Isotype | Mouse IgG1, kappa |
| Clone Name | B-K9 |
| Purity | Protein G affinity chromatography |
| UniProt | P19320 |
| Localization | Cytoplasmic, membrane |
| Applications | Flow Cytometry : 0.5-1ug/10 ⁶ cells Immunofluorescence : 1-2ug/ml |
| Limitations | This VCAM1 antibody is available for research use only. |



SDS-PAGE Analysis of Purified, BSA-Free VCAM1 Antibody (clone B-K9). Confirmation of Integrity and Purity of the Antibody.

Description

Recognizes a protein of 110kDa, identified as CD106 (also known as vascular cell adhesion molecule-1 (VCAM-1),

L1CAM and INCAM-100). It is a member of the Ig superfamily of adhesion molecules and is expressed at high levels on cytokine stimulated vascular endothelial cells, and at minimal levels on un-stimulated endothelial cells. It is also present on follicular and inter-follicular dendritic cells of lymph nodes, myoblasts, and some macrophages. L1CAM serves as a ligand for leukocyte integrin (VLA-4 or CD49d/CD29) and mediates cell adhesion of leukocytes to activated endothelium. It plays a role in various immunological and inflammatory responses. This mAb inhibits the binding of leukocytes to L1CAM on stimulated endothelial cells.

Application Notes

Optimal dilution of the VCAM1 antibody should be determined by the researcher.

Immunogen

Activated human umbilical vein endothelial cells (HUVEC) were used as the immunogen for the VCAM1 antibody.

Storage

Store the VCAM1 antibody at 2-8oC (with azide) or aliquot and store at -20oC or colder (without azide).