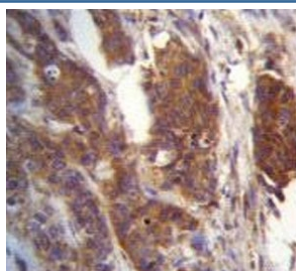


Ufm1-conjugating enzyme 1 Antibody / Ufc1 (F54767)

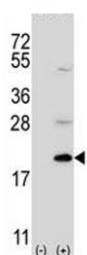
Catalog No.	Formulation	Size
F54767-0.4ML	In 1X PBS, pH 7.4, with 0.09% sodium azide	0.4 ml
F54767-0.08ML	In 1X PBS, pH 7.4, with 0.09% sodium azide	0.08 ml

[Bulk quote request](#)

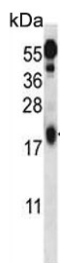
Availability	1-3 business days
Species Reactivity	Human, Mouse
Format	Purified
Clonality	Polyclonal (rabbit origin)
Isotype	Rabbit Ig
Purity	Antigen affinity purified
UniProt	Q9Y3C8
Applications	Western Blot : 1:500-1:1000 Immunohistochemistry (FFPE) : 1:10-1:50 Flow Cytometry : 1:10-1:50 (1x10 ⁶ cells)
Limitations	This Ufm1-conjugating enzyme 1 antibody is available for research use only.



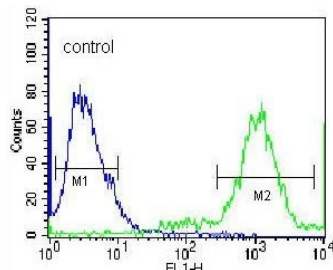
IHC testing of FFPE human bladder carcinoma tissue with Ufm1-conjugating enzyme 1 antibody. HIER: steam section in pH6 citrate buffer for 20 min and allow to cool prior to staining.



Western blot testing of 1) non-transfected and 2) transfected 293 cell lysate with Ufm1-conjugating enzyme 1 antibody.



Western blot testing of mouse kidney tissue lysate with Ufm1-conjugating enzyme 1 antibody. Predicted molecular weight ~19 kDa.



Flow cytometry testing of human HEK293 cells with Ufm1-conjugating enzyme 1 antibody; Blue=isotype control, Green= Ufm1-conjugating enzyme 1 antibody.

Description

Various ubiquitin-like (UBL) post-translational modifiers contribute critically to the protein degradation pathway. These UBLs are covalently linked to most target proteins through an enzymatic cascade analogous to ubiquitylation, consisting of E1 (activating), E2 (conjugating), and E3 (ligating) enzymes. Ufc1 belongs to the ubiquitin-conjugating enzyme family, and is an E2-like enzyme which forms an intermediate with UFM1, a novel ubiquitin-fold modifier, via thioester linkage.

Application Notes

The stated application concentrations are suggested starting points. Titration of the Ufm1-conjugating enzyme 1 antibody may be required due to differences in protocols and secondary/substrate sensitivity.

Immunogen

An amino acid sequence from the C-terminal region of the human protein was used as the immunogen for the Ufm1-conjugating enzyme 1 antibody.

Storage

Aliquot the Ufm1-conjugating enzyme 1 antibody and store frozen at -20°C or colder. Avoid repeated freeze-thaw cycles.