

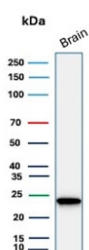
## UchL1 Antibody / PGP9.5 [clone rUCHL1/8133] (V5031)

Catalog No.	Formulation	Size
V5031-100UG	0.2 mg/ml in 1X PBS with 0.1 mg/ml BSA (US sourced), 0.05% sodium azide	100 ug
V5031-20UG	0.2 mg/ml in 1X PBS with 0.1 mg/ml BSA (US sourced), 0.05% sodium azide	20 ug
V5031SAF-100UG	1 mg/ml in 1X PBS; BSA free, sodium azide free	100 ug

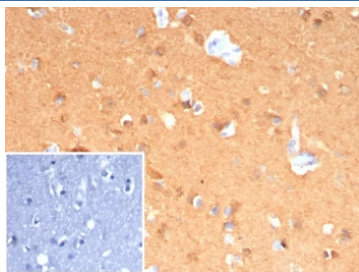
Recombinant **MOUSE MONOCLONAL**

[Bulk quote request](#)

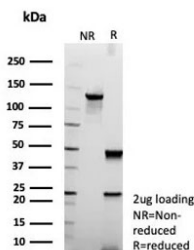
<b>Availability</b>	1-3 business days
<b>Species Reactivity</b>	Human
<b>Format</b>	Purified
<b>Clonality</b>	Recombinant Mouse Monoclonal
<b>Isotype</b>	Mouse IgG2a, kappa
<b>Clone Name</b>	rUCHL1/8133
<b>Purity</b>	Protein A/G affinity
<b>UniProt</b>	P09936
<b>Localization</b>	Cytoplasm, ER membrane
<b>Applications</b>	Immunohistochemistry (FFPE) : 1-2ug/ml for 30 min at RT Western Blot : 2-4ug/ml
<b>Limitations</b>	This UchL1 antibody is available for research use only.



Western blot testing of human brain tissue lysate with UchL1 antibody. Predicted molecular weight ~25 kDa.



IHC staining of FFPE human cerebellum tissue with UchL1 antibody (clone rUCHL1/8133). Inset: PBS used in place of primary Ab (secondary Ab negative control).  
HIER: boil tissue sections in pH 9 10mM Tris with 1mM EDTA for 20 min and allow to cool before testing.



SDS-PAGE analysis of purified, BSA-free UchL1 antibody (clone rUCHL1/8133) as confirmation of integrity and purity.

## Description

This mAb reacts with a protein of 20-30kDa, identified as PGP9.5, also known as ubiquitin carboxyl-terminal hydrolase-1 (UchL1). Initially, PGP9.5 expression in normal tissues was reported in neurons and neuroendocrine cells but later it was found in distal renal tubular epithelium, spermatogonia, Leydig cells, oocytes, melanocytes, prostatic secretory epithelium, ejaculatory duct cells, epididymis, mammary epithelial cells, Merkel cells, and dermal fibroblasts. Furthermore, immunostaining for PGP9.5 has been shown in a wide variety of mesenchymal neoplasms as well. A mutation in PGP9.5 gene is believed to cause a form of Parkinson's disease.

## Application Notes

Optimal dilution of the UchL1 antibody should be determined by the researcher.

## Immunogen

Recombinant full-length human UCHL1 protein was used as the immunogen for the UchL1 antibody.

## Storage

Aliquot the UchL1 antibody and store frozen at -20oC or colder. Avoid repeated freeze-thaw cycles.