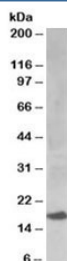


## UBE2I Antibody (R35903)

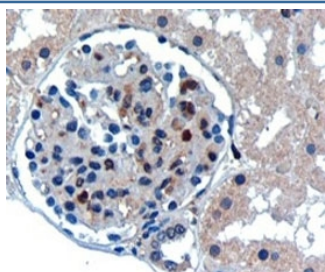
Catalog No.	Formulation	Size
R35903-100UG	0.5 mg/ml in 1X TBS, pH7.3, with 0.5% BSA (US sourced) and 0.02% sodium azide	100 ug

[Bulk quote request](#)

Availability	1-3 business days
Species Reactivity	Human, Mouse, Rat
Predicted Reactivity	Dog
Format	Antigen affinity purified
Clonality	Polyclonal (goat origin)
Isotype	Goat Ig
Purity	Antigen affinity
Gene ID	7329
Applications	Western Blot : 0.1-0.3ug/ml Immunohistochemistry (FFPE) : 1-2ug/ml Immunocytochemistry : suitable ELISA (peptide) LOD : 1:64000
Limitations	This UBE2I antibody is available for research use only.



Western blot testing of human kidney lysate with UBE2I antibody at 0.1ug/ml.  
Predicted/observed molecular weight: ~17kDa.



IHC staining of FFPE human kidney with UBE2I antibody at 0.3ug/ml. HIER: microwaved with pH9 Tris/EDTA buffer, HRP-staining.

## Description

Additional name(s) for this target protein: Ubiquitin-conjugating enzyme E2I

## Application Notes

Optimal dilution of the UBE2I antibody should be determined by the researcher.

## Immunogen

Amino acids SGIALSRLAQERK were used as the immunogen for this UBE2I antibody.

## Storage

Aliquot and store the UBE2I antibody at -20oC.