

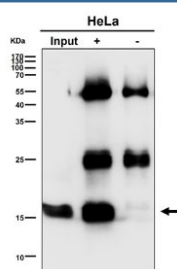
## UBE2D1 Antibody / SFT [clone 29U61] (RQ8684)

Catalog No.	Formulation	Size
RQ8684	Antibody in PBS with 0.02% sodium azide, 50% glycerol and 0.4-0.5mg/ml BSA	100 ul

Recombinant RABBIT MONOCLONAL

[Bulk quote request](#)

Availability	1-3 days
Species Reactivity	Human
Format	Purified
Clonality	Recombinant Rabbit Monoclonal
Isotype	Rabbit IgG
Clone Name	29U61
Purity	Affinity chromatography
UniProt	P51668
Applications	Western Blot : 1:500-1:2000 Immunoprecipitation : 1:50
Limitations	This UBE2D1 antibody is available for research use only.



Immunoprecipitation of UBE2D1 protein from 500ug of human HeLa whole cell lysate using UBE2D1 antibody at 1:50.



Western blot testing of human Raji cell lysate with UBE2D1 antibody. Predicted molecular weight ~17 kDa.

## Description

UBE2D1 functions in the ubiquitination of the tumor-suppressor protein p53 and the hypoxia-inducible transcription factor HIF1alpha by interacting with the E1 ubiquitin-activating enzyme and the E3 ubiquitin-protein ligases. [Wiki]

## Application Notes

Optimal dilution of the UBE2D1 antibody should be determined by the researcher.

## Immunogen

A synthetic peptide specific to human UBE2D1 protein was used as the immunogen for the UBE2D1 Antibody.

## Storage

Store the UBE2D1 antibody at -20oC.