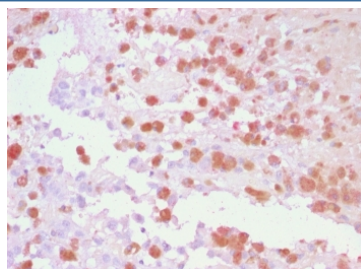


## Tyrosinase-Related Protein-1 Antibody / TRP1 / TYRP1 (V8898)

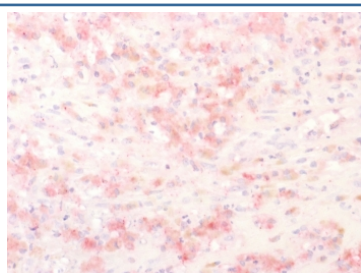
| Catalog No.    | Formulation   | Size   |
|----------------|---|--------|
| V8898-100UG    | 0.2 mg/ml in 1X PBS with 0.1 mg/ml BSA (US sourced), 0.05% sodium azide | 100 ug |
| V8898-20UG     | 0.2 mg/ml in 1X PBS with 0.1 mg/ml BSA (US sourced), 0.05% sodium azide | 20 ug  |
| V8898SAF-100UG | 1 mg/ml in 1X PBS; BSA free, sodium azide free                          | 100 ug |

[Bulk quote request](#)

|                           |  |
|---------------------------|--|
| <b>Availability</b>       | 1-3 business days  |
| <b>Species Reactivity</b> | Human  |
| <b>Format</b>             | Purified   |
| <b>Clonality</b>          | Polyclonal (rabbit origin)   |
| <b>Isotype</b>            | Rabbit IgG   |
| <b>Purity</b>             | Protein A affinity   |
| <b>UniProt</b>            | P17643   |
| <b>Localization</b>       | Cytoplasmic  |
| <b>Applications</b>       | Immunohistochemistry (FFPE) : 5-10ug/ml  |
| <b>Limitations</b>        | This Tyrosinase-Related Protein-1 antibody is available for research use only. |



IHC staining of FFPE human melanoma tissue with Tyrosinase-Related Protein-1 antibody using AEC Chromogen (red). HIER: boil tissue sections in pH 9 10mM Tris with 1mM EDTA for 20 min and allow to cool before testing.



IHC staining of FFPE human melanoma tissue with Tyrosinase-Related Protein-1 antibody using AEC Chromogen (red). HIER: boil tissue sections in pH 9 10mM Tris with 1mM EDTA for 20 min and allow to cool before testing.

## Description

It reacts with a 75kDa melanocyte-specific gene product, identified as Tyrosinase-related protein-1 (TRP-1). It is involved in melanin synthesis. TRP1 is present on the melanosomal membranes of melanoma, normal melanocytes and nevi. Recent evidence suggests that TRP-1 is involved in maintaining stability of tyrosinase protein and modulating its catalytic activity. TRP-1 is also involved in maintenance of melanosome ultrastructure and affects melanocyte proliferation and cell death.

## Application Notes

Optimal dilution of the Tyrosinase-Related Protein-1 antibody should be determined by the researcher.

## Immunogen

Recombinant human TYRP1 protein was used as the immunogen for the Tyrosinase-Related Protein-1 antibody.

## Storage

Aliquot the Tyrosinase-Related Protein-1 antibody and store frozen at -20°C or colder. Avoid repeated freeze-thaw cycles.