

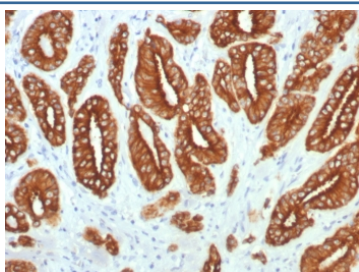
Type I Cytokeratin Antibody / Acidic / LMW [clone KRTL/7784R] (V4498)

| Catalog No. | Formulation | Size |
|----------------|-------------------------------------------------------------------------|--------|
| V4498-100UG | 0.2 mg/ml in 1X PBS with 0.1 mg/ml BSA (US sourced), 0.05% sodium azide | 100 ug |
| V4498-20UG | 0.2 mg/ml in 1X PBS with 0.1 mg/ml BSA (US sourced), 0.05% sodium azide | 20 ug |
| V4498SAF-100UG | 1 mg/ml in 1X PBS; BSA free, sodium azide free | 100 ug |

Recombinant **RABBIT MONOCLONAL**

[Bulk quote request](#)

| | |
|---------------------------|----------------------------------------------------------------------|
| Availability | 1-3 business days |
| Species Reactivity | Human |
| Format | Purified |
| Clonality | Recombinant Rabbit Monoclonal |
| Isotype | Rabbit IgG |
| Clone Name | KRTL/7784R |
| Purity | Protein A/G affinity |
| UniProt | Q7Z794 |
| Localization | Cytoplasm |
| Applications | Immunohistochemistry (FFPE) : 1-2ug/ml for 30 minutes at RT |
| Limitations | This Type I Cytokeratin antibody is available for research use only. |



IHC staining of FFPE human prostate carcinoma tissue with Type I Cytokeratin antibody (clone KRTL/7784R). HIER: boil tissue sections in pH 9 10mM Tris with 1mM EDTA for 20 min and allow to cool before testing.

Description

Application Notes

Optimal dilution of the Type I Cytokeratin antibody should be determined by the researcher.

Immunogen

A synthetic peptide corresponding to human Type I Cytokeratin proteins was used as the immunogen for the Type I Cytokeratin antibody.

Storage

Aliquot the Type I Cytokeratin antibody and store frozen at -20oC or colder. Avoid repeated freeze-thaw cycles.