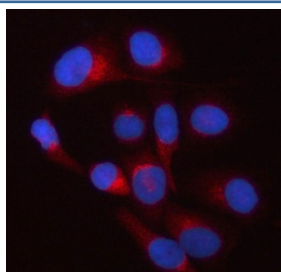


TWF2 Antibody / Twinfilin 2 (RQ8193)

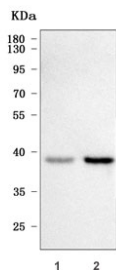
Catalog No.	Formulation	Size
RQ8193	0.5mg/ml if reconstituted with 0.2ml sterile DI water	100 ug

Bulk quote request

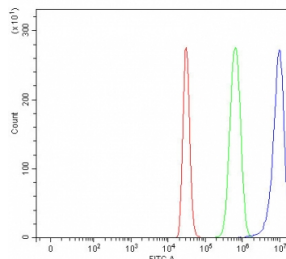
Availability	1-3 business days
Species Reactivity	Human
Format	Antigen affinity purified
Clonality	Polyclonal (rabbit origin)
Isotype	Rabbit IgG
Purity	Antigen affinity purified
Buffer	Lyophilized from 1X PBS with 2% Trehalose
UniProt	Q6IBS0
Localization	Cytoplasm
Applications	Western Blot : 0.5-1ug/ml Immunofluorescence : 5ug/ml Flow Cytometry : 1-3ug/million cells Direct ELISA : 0.1-0.5ug/ml
Limitations	This TWF2 antibody is available for research use only.



Immunofluorescent staining of FFPE human HeLa cells with TWF2 antibody (red) and DAPI nuclear stain (blue). HIER: steam section in pH6 citrate buffer for 20 min.



Western blot testing of human 1) 293T and 2) HepG2 cell lysate with TWF2 antibody.
Predicted molecular weight ~39 kDa.



Flow cytometry testing of fixed and permeabilized human HepG2 cells with TWF2 antibody at 1ug/million cells (blocked with goat sera); Red=cells alone, Green=isotype control, Blue= TWF2 antibody.

Description

Twinfilin-2 is a protein that in humans is encoded by the TWF2 gene. The protein encoded by this gene was identified by its interaction with the catalytic domain of protein kinase C-zeta. The encoded protein contains an actin-binding site and an ATP-binding site. It is most closely related to twinfilin (PTK9), a conserved actin monomer-binding protein.

Application Notes

Optimal dilution of the TWF2 antibody should be determined by the researcher.

Immunogen

E. coli-derived recombinant human protein (amino acids L13-K327) was used as the immunogen for the TWF2 antibody.

Storage

After reconstitution, the TWF2 antibody can be stored for up to one month at 4oC. For long-term, aliquot and store at -20oC. Avoid repeated freezing and thawing.