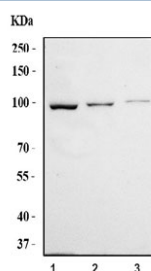


## TUBGCP3 Antibody / Gamma-tubulin complex component 3 (RQ6690)

Catalog No.	Formulation	Size
RQ6690	0.5mg/ml if reconstituted with 0.2ml sterile DI water	100 ug

**Bulk quote request**

<b>Availability</b>	1-3 business days
<b>Species Reactivity</b>	Human
<b>Format</b>	Antigen affinity purified
<b>Clonality</b>	Polyclonal (rabbit origin)
<b>Isotype</b>	Rabbit IgG
<b>Purity</b>	Antigen affinity purified
<b>Buffer</b>	Lyophilized from 1X PBS with 2% Trehalose
<b>UniProt</b>	Q96CW5
<b>Applications</b>	Western Blot : 1-2ug/ml Direct ELISA : 0.1-0.5ug/ml
<b>Limitations</b>	This TUBGCP3 antibody is available for research use only.



Western blot testing of human 1) 293T, 2) Jurkat and 3) HeLa cell lysate with TUBGCP3 antibody. Predicted molecular weight ~104 kDa.

### Description

Gamma-tubulin complex component 3 is a protein that in humans is encoded by the TUBGCP3 gene. TUBGCP3, also named as gamma-tubulin complex protein 3, localized to the centrosome, is a member of g-tubulin complex proteins which play key roles in microtubule nucleation and organization. It has been reported that TUBGCP3 rotation can bring g-tubulin molecules into proximity.

### Application Notes

Optimal dilution of the TUBGCP3 antibody should be determined by the researcher.

## Immunogen

Recombinant human protein (amino acids M1-R802) was used as the immunogen for the TUBGCP3 antibody.

## Storage

After reconstitution, the TUBGCP3 antibody can be stored for up to one month at 4oC. For long-term, aliquot and store at -20oC. Avoid repeated freezing and thawing.