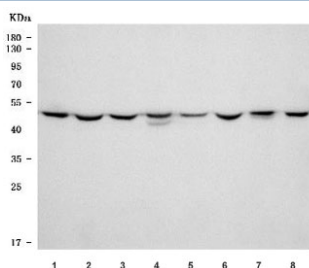


## TUBG1/2 Antibody / Gamma Tubulin (RQ7672)

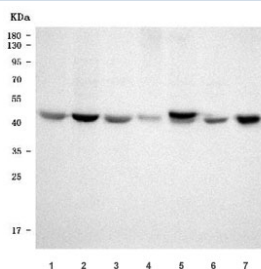
Catalog No.	Formulation	Size
RQ7672	0.5mg/ml if reconstituted with 0.2ml sterile DI water	100 ug

**Bulk quote request**

<b>Availability</b>	1-3 business days
<b>Species Reactivity</b>	Human, Mouse, Rat
<b>Format</b>	Antigen affinity purified
<b>Clonality</b>	Polyclonal (rabbit origin)
<b>Isotype</b>	Rabbit IgG
<b>Purity</b>	Antigen affinity purified
<b>Buffer</b>	Lyophilized from 1X PBS with 2% Trehalose
<b>UniProt</b>	P23258, Q9NRH3
<b>Applications</b>	Western Blot : 0.5-1ug/ml Direct ELISA : 0.1-0.5ug/ml
<b>Limitations</b>	This TUBG1/2 antibody is available for research use only.



Western blot testing of 1) rat testis, 2) rat brain, 3) rat C6, 4) rat PC-12, 5) mouse testis, 6) mouse brain, 7) mouse Neuro-2a and 8) mouse SP2/0 cell lysate with TUBG1/2 antibody. Predicted molecular weight ~51 kDa.



Western blot testing of human 1) MCF7, 2) HepG2, 3) A549, 4) T-47D, 5) U-251, 6) Caco-2 and 7) HaCaT cell lysate with TUBG1/2 antibody. Predicted molecular weight ~51 kDa.

## Description

Tubulin, gamma 1/2 is a protein in humans that is encoded by the TUBG1/2 gene. This gene encodes a member of the tubulin superfamily. The encoded protein localizes to the centrosome where it binds to microtubules as part of a complex referred to as the gamma-tubulin ring complex. The protein mediates microtubule nucleation and is required for microtubule formation and progression of the cell cycle. A pseudogene of this gene is found on chromosome 7.

## Application Notes

Optimal dilution of the TUBG1/2 antibody should be determined by the researcher.

## Immunogen

E. coli-derived recombinant human protein (amino acids Q167-Q394) was used as the immunogen for the TUBG1/2 antibody.

## Storage

After reconstitution, the TUBG1/2 antibody can be stored for up to one month at 4°C. For long-term, aliquot and store at -20°C. Avoid repeated freezing and thawing.