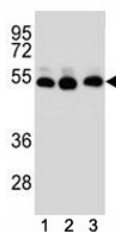


## TUBB2B Antibody / Tubulin beta 2B (F41797)

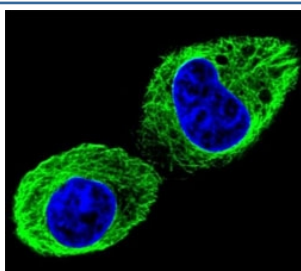
Catalog No.	Formulation	Size
F41797-0.4ML	In 1X PBS, pH 7.4, with 0.09% sodium azide	0.4 ml
F41797-0.08ML	In 1X PBS, pH 7.4, with 0.09% sodium azide	0.08 ml

[Bulk quote request](#)

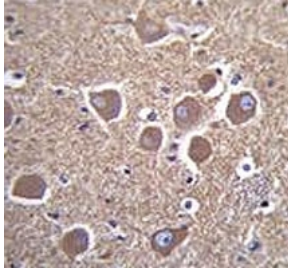
<b>Availability</b>	1-3 business days
<b>Species Reactivity</b>	Human
<b>Predicted Reactivity</b>	Mouse, Rat, Bovine, Pig, Primate, Chicken, Xenopus
<b>Format</b>	Antigen affinity purified
<b>Clonality</b>	Polyclonal (rabbit origin)
<b>Isotype</b>	Rabbit Ig
<b>Purity</b>	Antigen affinity
<b>UniProt</b>	Q9BVA1
<b>Applications</b>	Immunofluorescence : 1:10-1:50 Western Blot : 1:1000 IHC (Paraffin) : 1:10-1:50
<b>Limitations</b>	This TUBB2B antibody is available for research use only.



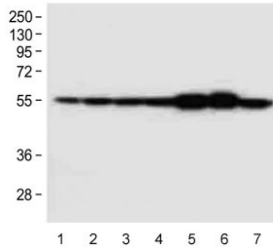
TUBB2B antibody western blot analysis of (1) human HepG2, (2) human HeLa, (3) human MDA-MB-231 cell lysate.



Confocal immunofluorescent analysis of TUBB2B antibody with HepG2 cells followed by Alexa Fluor 488-conjugated goat anti-rabbit IgG (green). DAPI was used as a nuclear counterstain (blue).



TUBB2B antibody immunohistochemistry analysis in formalin fixed and paraffin embedded human brain tissue.



Western blot testing of 1) human HeLa, 2) human HepG2, 3) human MDA-MB-231, 4) human K562, 5) mouse brain, 6) mouse cerebellum and 7) rat PC-12 cell lysate with TUBB2B antibody.

## Description

The protein encoded by this gene is a beta isoform of tubulin, which binds GTP and is a major component of microtubules. This gene is highly similar to TUBB2A and TUBB2C. Defects in this gene are a cause of asymmetric polymicrogyria. [provided by RefSeq].

## Application Notes

Titration of the TUBB2B antibody may be required due to differences in protocols and secondary/substrate sensitivity.

## Immunogen

A portion of amino acids 12-39 from the human protein was used as the immunogen for this TUBB2B antibody.

## Storage

Aliquot the TUBB2B antibody and store frozen at -20°C or colder. Avoid repeated freeze-thaw cycles.