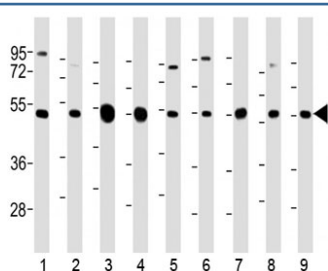


## TUBB2A Antibody / Tubulin beta 2A (F54147)

Catalog No.	Formulation	Size
F54147-0.2ML	In 1X PBS, pH 7.4, with 0.09% sodium azide	0.2 ml
F54147-0.05ML	In 1X PBS, pH 7.4, with 0.09% sodium azide	0.05 ml

[Bulk quote request](#)

<b>Availability</b>	1-3 business days
<b>Species Reactivity</b>	Human, Mouse, Rat
<b>Predicted Reactivity</b>	Primate
<b>Format</b>	Antigen affinity purified
<b>Clonality</b>	Polyclonal (rabbit origin)
<b>Isotype</b>	Rabbit Ig
<b>Purity</b>	Antigen affinity
<b>UniProt</b>	Q7TMM9
<b>Applications</b>	Western Blot : 1:1000-1:2000
<b>Limitations</b>	This TUBB2A antibody is available for research use only.



Western blot testing of mouse 1) C2C12, 2) NIH3T3, 3) brain, human 4) brain, 5) HeLa, 6) A431, 7) HEK293, 8) MCF7 and 9) rat PC-12 lysate with TUBB2A antibody at 1:2000. Predicted molecular weight ~50 kDa.

## Description

Tubulin is the major constituent of microtubules. It binds two moles of GTP, one at an exchangeable site on the beta chain and one at a non-exchangeable site on the alpha chain (By similarity).

## Application Notes

The stated application concentrations are suggested starting points. Titration of the TUBB2A antibody may be required due to differences in protocols and secondary/substrate sensitivity.

## **Immunogen**

A portion of amino acids 194-225 from mouse Tubulin beta 2A was used as the immunogen for the TUBB2A antibody.

## **Storage**

Aliquot the TUBB2A antibody and store frozen at -20oC or colder. Avoid repeated freeze-thaw cycles.