

## TUBA4A Antibody / Tubulin alpha 4A (F43042)

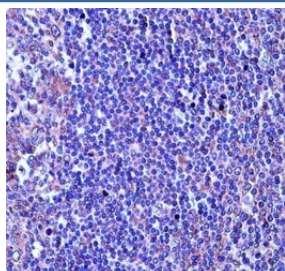
Catalog No.	Formulation	Size
F43042-0.4ML	In 1X PBS, pH 7.4, with 0.09% sodium azide	0.4 ml
F43042-0.08ML	In 1X PBS, pH 7.4, with 0.09% sodium azide	0.08 ml

[Bulk quote request](#)

<b>Availability</b>	1-3 business days
<b>Species Reactivity</b>	Human
<b>Predicted Reactivity</b>	Mouse, Rat, Bovine, Primate
<b>Format</b>	Antigen affinity purified
<b>Clonality</b>	Polyclonal (rabbit origin)
<b>Isotype</b>	Rabbit Ig
<b>Purity</b>	Antigen affinity
<b>UniProt</b>	P68366
<b>Applications</b>	Western Blot : 1:1000 IHC (Paraffin) : 1:10-1:50
<b>Limitations</b>	This TUBA4A antibody is available for research use only.

72  
55  
36  
28

TUBA4A antibody western blot analysis in MDA-MB435 lysate.



TUBA4A antibody immunohistochemistry analysis in formalin fixed and paraffin embedded human tonsil tissue.

## Description

Microtubules of the eukaryotic cytoskeleton perform essential and diverse functions and are composed of a heterodimer of alpha and beta tubulin. The genes encoding these microtubule constituents are part of the tubulin superfamily, which is composed of six distinct families. Genes from the alpha, beta and gamma tubulin families are found in all eukaryotes. The alpha and beta tubulins represent the major components of microtubules, while gamma tubulin plays a critical role in the nucleation of microtubule assembly. There are multiple alpha and beta tubulin genes and they are highly conserved among and between species. This gene encodes an alpha tubulin that is a highly conserved homolog of a rat testis-specific alpha tubulin.

## Application Notes

Titration of the TUBA4A antibody may be required due to differences in protocols and secondary/substrate sensitivity.

## Immunogen

A portion of amino acids 417-446 from the human protein was used as the immunogen for this TUBA4A antibody.

## Storage

Aliquot the TUBA4A antibody and store frozen at -20oC or colder. Avoid repeated freeze-thaw cycles.