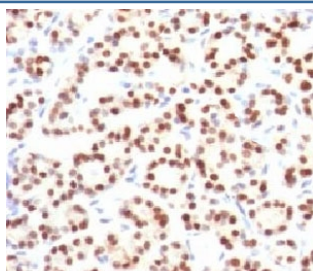


TTF-1 Antibody / NKX2.1 [clone HBNK2-1] (V7084)

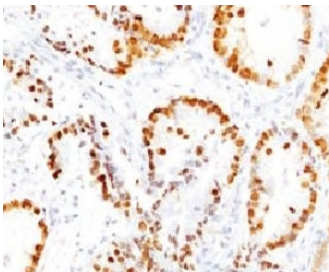
| Catalog No. | Formulation | Size |
|----------------|---|--------|
| V7084-100UG | 0.2 mg/ml in 1X PBS with 0.1 mg/ml BSA (US sourced) and 0.05% sodium azide | 100 ug |
| V7084-20UG | 0.2 mg/ml in 1X PBS with 0.1 mg/ml BSA (US sourced) and 0.05% sodium azide | 20 ug |
| V7084SAF-100UG | 1 mg/ml in 1X PBS; BSA free, sodium azide free | 100 ug |
| V7084IHC-7ML | Prediluted in 1X PBS with 0.1 mg/ml BSA (US sourced) and 0.05% sodium azide; *For IHC use only* | 7 ml |

[Bulk quote request](#)

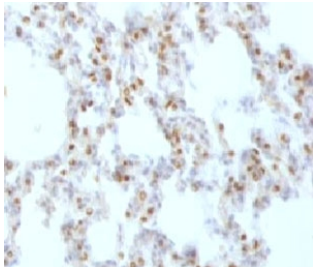
| | |
|---------------------------|---|
| Availability | 1-3 business days |
| Species Reactivity | Human, Rat |
| Format | Purified |
| Clonality | Monoclonal (mouse origin) |
| Isotype | Mouse IgG1, kappa |
| Clone Name | HBNK2-1 |
| Purity | Protein G affinity chromatography |
| UniProt | P43699 |
| Localization | Nuclear |
| Applications | Immunohistochemistry (FFPE) : 1-2ug/ml for 30 min at RT Prediluted IHC Only Format : incubate for 30 min at RT (1) |
| Limitations | This TTF-1 antibody is available for research use only. |



IHC testing of FFPE human thyroid tissue with TTF-1 antibody (clone HBNK2-1).
Required HIER: boil FFPE tissue sections in pH6 10mM citrate buffer for 10-20 minutes, followed by cooling at RT for 20 minutes.



IHC testing of FFPE human lung tissue with TTF-1 antibody (clone HBNK2-1). Required HIER: boil FFPE tissue sections in pH6 10mM citrate buffer for 10-20 minutes, followed by cooling at RT for 20 minutes.



IHC testing of FFPE rat lung tissue with TTF-1 antibody (clone HBNK2-1). Required HIER: boil FFPE tissue sections in pH6 10mM citrate buffer for 10-20 minutes, followed by cooling at RT for 20 minutes.

Description

Thyroid transcription factor-1 is a member of the NKx2 family of homeodomain transcription factors. It is expressed in epithelial cells of the thyroid gland and the lung. Anti-TTF-1 is useful in differentiating primary adenocarcinoma of the lung from metastatic carcinomas originating in the breast, mediastinal germ cell tumors, and malignant mesothelioma. TTF-1 reactivity is also seen in thyroid malignancies.

Application Notes

Titering of the TTF-1 antibody may be required for optimal performance.

1. The prediluted format is supplied in a dropper bottle and is optimized for use in IHC. After epitope retrieval step (if required), drip mAb solution onto the tissue section and incubate at RT for 30 min.

Immunogen

Recombinant protein was used as the immunogen for the TTF-1 antibody.

Storage

Store the TTF-1 antibody at 2-8oC (with azide) or aliquot and store at -20oC or colder (without azide).