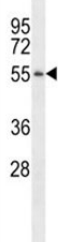


## TSPY Antibody (F40035)

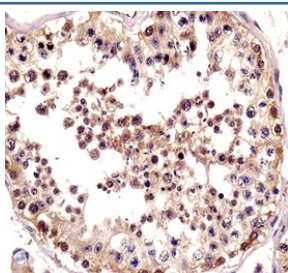
Catalog No.	Formulation	Size
F40035-0.4ML	In 1X PBS, pH 7.4, with 0.09% sodium azide	0.4 ml
F40035-0.08ML	In 1X PBS, pH 7.4, with 0.09% sodium azide	0.08 ml

[Bulk quote request](#)

<b>Availability</b>	1-3 business days
<b>Species Reactivity</b>	Human
<b>Format</b>	Antigen affinity purified
<b>Clonality</b>	Polyclonal (rabbit origin)
<b>Isotype</b>	Rabbit Ig
<b>Purity</b>	Antigen affinity
<b>UniProt</b>	Q01534
<b>Applications</b>	Western Blot : 1:1000 IHC (Paraffin) : 1:10-1:50
<b>Limitations</b>	This TSPY antibody is available for research use only.



Western blot analysis of TSPY antibody pre-incubated without (Lane 1) and with (2) blocking peptide in LNCAP lysate.



TSPY antibody immunohistochemistry analysis in formalin fixed and paraffin embedded human testis tissue.

## Description

TSPY may be involved in sperm differentiation and proliferation.

## Application Notes

Titration of the TSPY antibody may be required due to differences in protocols and secondary/substrate sensitivity.

## Immunogen

A portion of amino acids 274-303 from the human protein was used as the immunogen for this TSPY antibody.

## Storage

Aliquot the TSPY antibody and store frozen at -20oC or colder. Avoid repeated freeze-thaw cycles.