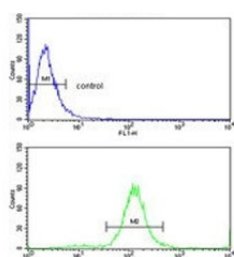


## TSH beta Antibody / TSHB (F54984)

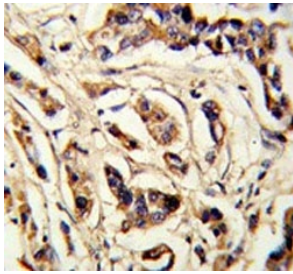
Catalog No.	Formulation	Size
F54984-0.4ML	In 1X PBS, pH 7.4, with 0.09% sodium azide	0.4 ml
F54984-0.08ML	In 1X PBS, pH 7.4, with 0.09% sodium azide	0.08 ml

[Bulk quote request](#)

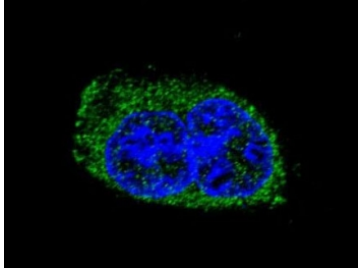
<b>Availability</b>	1-3 business days
<b>Species Reactivity</b>	Human
<b>Format</b>	Purified
<b>Clonality</b>	Polyclonal (rabbit origin)
<b>Isotype</b>	Rabbit Ig
<b>Purity</b>	Antigen affinity purified
<b>UniProt</b>	P01222
<b>Localization</b>	Cytoplasmic
<b>Applications</b>	Immunofluorescence : 1:10-1:50 Flow Cytometry : 1:10-1:50 (1x10 <sup>6</sup> cells) Immunohistochemistry (FFPE) : 1:50-1:100 Western Blot : 1:500-1:1000
<b>Limitations</b>	This TSH beta antibody is available for research use only.



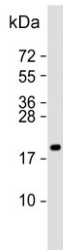
Flow cytometry testing of human MDA-MB-231 cells with TSH beta antibody;  
Blue=isotype control, Green= TSH beta antibody.



IHC testing of FFPE human breast cancer tissue with TSH beta antibody. HIER: steam section in pH6 citrate buffer for 20 min and allow to cool prior to staining.



Immunofluorescent staining of human MDA-MB-231 cells with TSH beta antibody (green) and DAPI nuclear stain (blue).



Western blot testing of human MDA-MB-231 cell lysate with TSH beta antibody. Predicted molecular weight ~16 kDa.

## Description

TSH beta is indispensable for the control of thyroid structure and metabolism.

## Application Notes

The stated application concentrations are suggested starting points. Titration of the TSH beta antibody may be required due to differences in protocols and secondary/substrate sensitivity.

## Immunogen

A portion of amino acids 58-86 from the human protein was used as the immunogen for the TSH beta antibody.

## Storage

Aliquot the TSH beta antibody and store frozen at -20°C or colder. Avoid repeated freeze-thaw cycles.