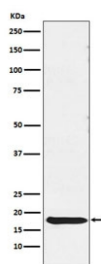


TSH beta Antibody [clone AFDE-20] (RQ4874)

Catalog No.	Formulation	Size
RQ4874	Antibody in PBS with 0.02% sodium azide, 50% glycerol and 0.4-0.5mg/ml BSA	100 ul

[Bulk quote request](#)

Availability	1-2 weeks
Species Reactivity	Human
Format	Purified
Clonality	Rabbit Monoclonal
Isotype	Rabbit IgG
Clone Name	AFDE-20
Purity	Affinity purified
UniProt	P01222
Applications	Western Blot : 1:500-1:2000
Limitations	This TSH beta antibody is available for research use only.



Western blot testing of human pituitary lysate with TSH beta antibody. Predicted molecular weight ~16 kDa.

Description

Various hormones are secreted from the anterior pituitary during development and growth. Thyroid Stimulating Hormone (TSH) is secreted from the anterior pituitary and controls thyroid structure and metabolism.

Application Notes

Optimal dilution of the TSH beta antibody should be determined by the researcher.

Immunogen

A synthetic peptide specific to human TSH beta / TSHB was used as the immunogen for the TSH beta antibody.

Storage

Store the TSH beta antibody at -20oC.