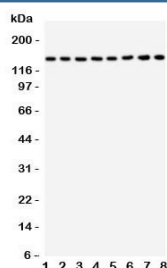


TSC1 Antibody (Hamartin) (R31119)

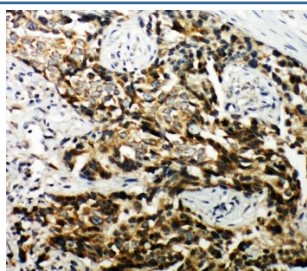
Catalog No.	Formulation	Size
R31119	0.5mg/ml if reconstituted with 0.2ml sterile DI water	100 ug

Bulk quote request

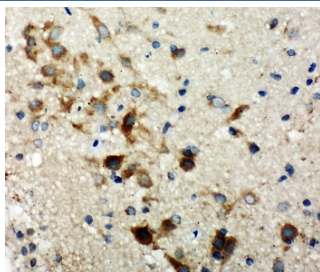
Availability	1-3 business days
Species Reactivity	Human, Mouse, Rat
Format	Antigen affinity purified
Clonality	Polyclonal (rabbit origin)
Isotype	Rabbit IgG
Purity	Antigen affinity
Buffer	Lyophilized from 1X PBS with 2.5% BSA and 0.025% sodium azide/thimerosal
UniProt	Q92574
Applications	Western Blot : 0.5-1ug/ml Immunohistochemistry (FFPE) : 0.5-1ug/ml
Limitations	This TSC1 antibody is available for research use only.



Western blot testing of TSC1 antibody and rat samples: 1. skeletal muscle; 2. heart; 3. brain; 4. lung; and human samples: 5. 293T; 6. HeLa; 7. HT1080; 8. SMMC-7721. Expected/observed molecular weight: 130~150 kDa.



IHC-P: TSC1 antibody testing of human breast cancer tissue



IHC-P: TSC1 antibody testing of rat brain tissue

Description

TSC1 (Tuberous Sclerosis 1), also called Hamartin, is a human protein and gene. As part of a comprehensive strategy to identify the gene mutant in tuberous sclerosis-1, van Slegtenhorst et al.(1997) developed an overlapping contig of clones from the 1.4-Mb TSC1 region on chromosome 9. Benvenuto et al.(2000) showed that overexpression of the TSC1 gene in rat fibroblasts inhibits growth and causes changes in cell morphology. Van Slegtenhorst et al.(1998) showed that hamartin and tuberin associate physically in vivo, however, and that the interaction is mediated by predicted coiled-coil domains.

Application Notes

The stated application concentrations are suggested starting amounts. Titration of the TSC1 antibody may be required due to differences in protocols and secondary/substrate sensitivity.

Immunogen

An amino acid sequence from the C-terminus of human Tuberous Sclerosis 1 (QLHIMDYNETHHEHS) was used as the immunogen for this TSC1 antibody (100% rat homology).

Storage

After reconstitution, the TSC1 antibody can be stored for up to one month at 4°C. For long-term, aliquot and store at -20°C. Avoid repeated freezing and thawing.