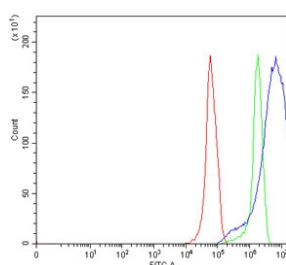


TRPV6 Antibody / CaT-L / CaT1 (RQ7210)

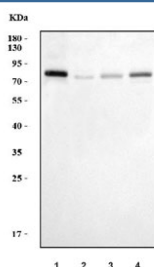
Catalog No.	Formulation	Size
RQ7210	0.5mg/ml if reconstituted with 0.2ml sterile DI water	100 ug

Bulk quote request

Availability	1-3 business days
Species Reactivity	Human
Format	Antigen affinity purified
Clonality	Polyclonal (rabbit origin)
Isotype	Rabbit IgG
Purity	Antigen affinity purified
Buffer	Lyophilized from 1X PBS with 2% Trehalose
UniProt	Q9H1D0
Applications	Western Blot : 0.5-1ug/ml Flow Cytometry : 1-3ug/million cells Direct ELISA : 0.1-0.5ug/ml
Limitations	This TRPV6 antibody is available for research use only.



Flow cytometry testing of human RT4 cells with TRPV6 antibody at 1ug/million cells (blocked with goat sera); Red=cells alone, Green=isotype control, Blue= TRPV6 antibody.



Western blot testing of human 1) placenta, 2) PC-3, 3) HepG2 and 4) HGC-27 cell lysate with TRPV6 antibody. Predicted molecular weight ~87 kDa (isoform 1) and ~68 kDa (isoform 2).

Description

TRPV6 (Transient Receptor Potential Cation Channel Subfamily V Member 6), also known as ECAC2, CAT1 or CATL, a membrane calcium channel which is responsible for the first step in calcium absorption in the intestine. TRPV6 is a member of the Transient receptor potential (TRP) family of membrane proteins. Using FISH, Peng et al.(2000) mapped the TRPV6 gene to chromosome 7q33-q34. Peng et al.(2000) determined that TRPV6 mediates calcium uptake independent of sodium, chloride, and hydrogen; however, calcium influx was higher at alkaline rather than acidic pH. Functional analysis by Peng et al.(2001) indicated that TRPV5 mediates greater calcium uptake than TRPV6. They concluded that TRPV5 and TRPV6 are calcium-selective channels and share a common ancestral gene.

Application Notes

Optimal dilution of the TRPV6 antibody should be determined by the researcher.

Immunogen

Recombinant human protein (amino acids A15-I765) was used as the immunogen for the TRPV6 antibody.

Storage

After reconstitution, the TRPV6 antibody can be stored for up to one month at 4oC. For long-term, aliquot and store at -20oC. Avoid repeated freezing and thawing.