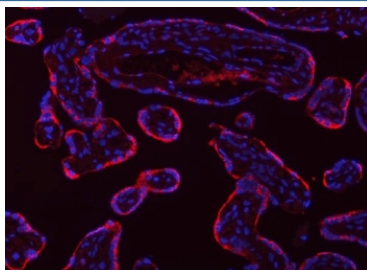


Tropomyosin 2 Antibody / TPM2 / Tropomyosin beta (RQ7438)

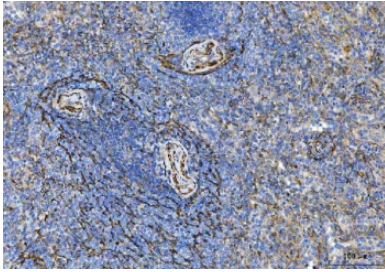
Catalog No.	Formulation	Size
RQ7438	0.5mg/ml if reconstituted with 0.2ml sterile DI water	100 ug

Bulk quote request

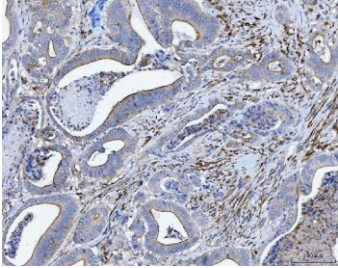
Availability	1-3 business days
Species Reactivity	Human, Mouse, Rat
Format	Antigen affinity purified
Clonality	Polyclonal (rabbit origin)
Isotype	Rabbit IgG
Purity	Antigen affinity purified
Buffer	Lyophilized from 1X PBS with 2% Trehalose
UniProt	P07951
Localization	Cytoplasmic
Applications	Western Blot : 0.5-1ug/ml Immunohistochemistry (FFPE) : 2-5ug/ml Flow Cytometry : 1-3ug/million cells Immunofluorescence : 2-5ug/ml
Limitations	This Tropomyosin 2 antibody is available for research use only.



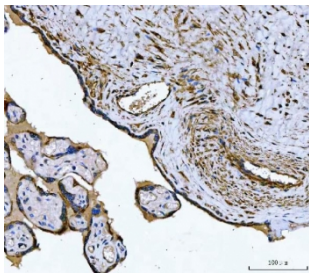
Immunofluorescent staining of FFPE human placental tissue with Tropomyosin 2 antibody (red) and DAPI nuclear stain (blue). HIER: steam section in pH6 citrate buffer for 20 min.



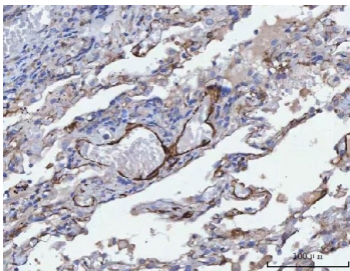
IHC staining of FFPE human spleen tissue with Tropomyosin 2 antibody. HIER: boil tissue sections in pH8 EDTA for 20 min and allow to cool before testing.



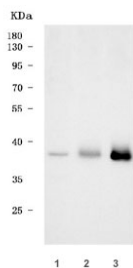
IHC staining of FFPE human colorectal adenocarcinoma tissue with Tropomyosin 2 antibody. HIER: boil tissue sections in pH8 EDTA for 20 min and allow to cool before testing.



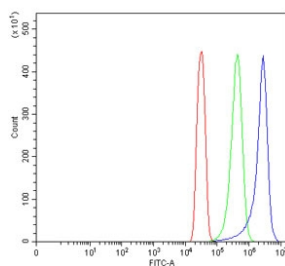
IHC staining of FFPE human placental tissue with Tropomyosin 2 antibody. HIER: boil tissue sections in pH8 EDTA for 20 min and allow to cool before testing.



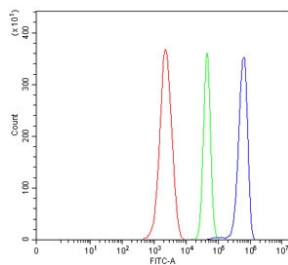
IHC staining of FFPE human lung adenocarcinoma tissue with Tropomyosin 2 antibody. HIER: boil tissue sections in pH8 EDTA for 20 min and allow to cool before testing.



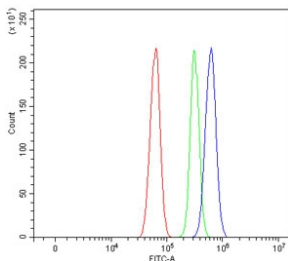
Western blot testing of 1) human HeLa, 2) rat H9C2(2-1) and 3) mouse skeletal muscle tissue lysate with Tropomyosin 2 antibody. Expected molecular weight: 33-37 kDa.



Flow cytometry testing of human SiHa cells with Tropomyosin 2 antibody at 1ug/million cells (blocked with goat sera); Red=cells alone, Green=isotype control, Blue= Tropomyosin 2 antibody.



Flow cytometry testing of mouse ANA-1 cells with Tropomyosin 2 antibody at 1ug/million cells (blocked with goat sera); Red=cells alone, Green=isotype control, Blue= Tropomyosin 2 antibody.



Flow cytometry testing of rat RH35 cells with Tropomyosin 2 antibody at 1ug/million cells (blocked with goat sera); Red=cells alone, Green=isotype control, Blue= Tropomyosin 2 antibody.

Description

Beta-Tropomyosin, also known as tropomyosin beta chain is a protein that in humans is encoded by the TPM2 gene. This gene encodes beta-tropomyosin, a member of the actin filament binding protein family, and mainly expressed in slow, type 1 muscle fibers. Mutations in this gene can alter the expression of other sarcomeric tropomyosin proteins, and cause cap disease, nemaline myopathy and distal arthrogryposis syndromes. Alternatively spliced transcript variants encoding different isoforms have been found for this gene.

Application Notes

Optimal dilution of the Tropomyosin 2 antibody should be determined by the researcher.

Immunogen

Amino acids KQAEDRCKQLEEEQQALQK from the human protein were used as the immunogen for the Tropomyosin 2 antibody.

Storage

After reconstitution, the Tropomyosin 2 antibody can be stored for up to one month at 4oC. For long-term, aliquot and store at -20oC. Avoid repeated freezing and thawing.