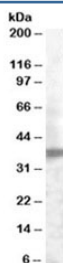


## TROP2 Antibody (R34326)

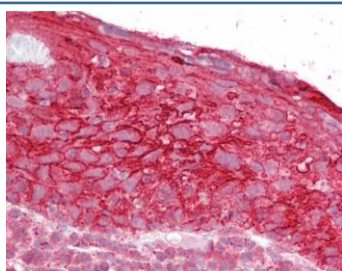
Catalog No.	Formulation	Size
R34326-100UG	0.5 mg/ml in 1X TBS, pH7.3, with 0.5% BSA (US sourced) and 0.02% sodium azide	100 ug

[Bulk quote request](#)

Availability	1-3 business days
Species Reactivity	Human
Predicted Reactivity	Cow, Dog, Mouse, Pig, Rat
Format	Antigen affinity purified
Clonality	Polyclonal (goat origin)
Isotype	Goat Ig
Purity	Antigen affinity
Gene ID	4070
Applications	Western Blot : 0.2-0.5ug/ml IHC (FFPE) : 2.5ug/ml ELISA (peptide) LOD : 1:4000
Limitations	This TROP2 antibody is available for research use only.



Western blot testing of human prostate lysate with TROP2 antibody at 0.2ug/ml.  
Predicted molecular weight ~36 kDa.



IHC testing of FFPE human tonsil tissue with TROP2 antibody at 2.5ug/ml. Required  
HIER: steamed antigen retrieval with pH6 citrate buffer; AP-staining.

## Description

Additional name(s) for this target protein: Tumor-associated calcium signal transducer 2; TACSTD2

## Application Notes

Optimal dilution of the TROP2 antibody should be determined by the researcher.

## Immunogen

Amino acids HYEQPTIQIELRQN were used as the immunogen for this TROP2 antibody.

## Storage

Aliquot and store the TROP2 antibody at -20oC.