

## TROP2 Antibody (F49785)

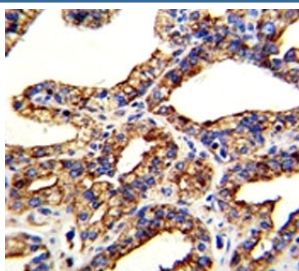
Catalog No.	Formulation	Size
F49785-0.4ML	In 1X PBS, pH 7.4, with 0.09% sodium azide	0.4 ml
F49785-0.08ML	In 1X PBS, pH 7.4, with 0.09% sodium azide	0.08 ml

[Bulk quote request](#)

<b>Availability</b>	1-3 business days
<b>Species Reactivity</b>	Human
<b>Format</b>	Purified
<b>Clonality</b>	Polyclonal (rabbit origin)
<b>Isotype</b>	Rabbit Ig
<b>Purity</b>	Purified
<b>UniProt</b>	P09758
<b>Applications</b>	Western Blot : 1:1000 IHC (Paraffin) : 1:50-1:100
<b>Limitations</b>	This TROP2 antibody is available for research use only.



Western blot analysis of TROP2 antibody and HL-60 lysate. Predicted molecular weight ~36 kDa.



IHC analysis of FFPE human prostate carcinoma with TROP2 antibody

## Description

TROP2 is a carcinoma-associated antigen defined by the monoclonal antibody GA733. This antigen is a member of a family including at least two type I membrane proteins. It transduces an intracellular calcium signal and acts as a cell surface receptor. Mutations of its gene result in gelatinous drop-like corneal dystrophy, an autosomal recessive disorder characterized by severe corneal amyloidosis leading to blindness.

## Application Notes

Titration of the TROP2 antibody may be required due to differences in protocols and secondary/substrate sensitivity.

## Immunogen

A portion of amino acids 162-190 from the human protein was used as the immunogen for this TROP2 antibody.

## Storage

Aliquot the TROP2 antibody and store frozen at -20oC or colder. Avoid repeated freeze-thaw cycles.