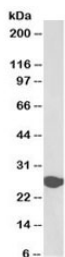


Triosephosphate isomerase Antibody Biotin Conjugate (R34724BTN)

Catalog No.	Formulation	Size
R34724BTN	0.5 mg/ml in 1X TBS, pH7.3, with 0.5% BSA (US sourced) and 0.02% sodium azide	100 ug

[Bulk quote request](#)

Availability	1-3 business days
Species Reactivity	Human, Mouse
Predicted Reactivity	Cow, Dog, Rat
Format	Biotin Conjugate
Clonality	Polyclonal (goat origin)
Isotype	Goat Ig
Purity	Antigen affinity
Gene ID	7167
Applications	Western Blot : 0.03-0.1ug/ml Immunohistochemistry (FFPE) : suitable ELISA (peptide) LOD : 1:16000
Limitations	This Triosephosphate isomerase antibody is available for research use only.



Western blot testing of human liver lysate with biotinylated Triosephosphate isomerase antibody at 0.03ug/ml. Predicted molecular weight: ~26kDa.

Description

Additional name(s) for this target protein: TPI1

Application Notes

Optimal dilution of the Triosephosphate isomerase antibody should be determined by the researcher.

Immunogen

Amino acids LKPEFVDIINAKQ were used as the immunogen for this Triosephosphate isomerase antibody.

Storage

Aliquot and store the Triosephosphate isomerase antibody at -20oC.