

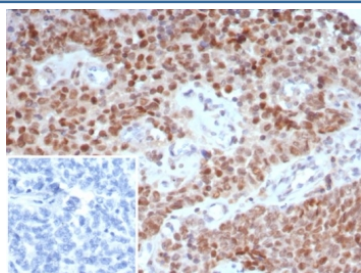
Tricho-rhino-phalangeal syndrome type I Antibody / TRPS1 [clone TRPS1/7912R] (V5263)

Catalog No.	Formulation	Size
V5263-100UG	0.2 mg/ml in 1X PBS with 0.1 mg/ml BSA (US sourced), 0.05% sodium azide	100 ug
V5263-20UG	0.2 mg/ml in 1X PBS with 0.1 mg/ml BSA (US sourced), 0.05% sodium azide	20 ug
V5263SAF-100UG	1 mg/ml in 1X PBS; BSA free, sodium azide free	100 ug

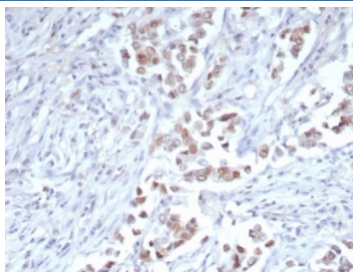
Recombinant **RABBIT MONOCLONAL**

[Bulk quote request](#)

Availability	1-3 business days
Species Reactivity	Human
Format	Purified
Clonality	Recombinant Rabbit Monoclonal
Isotype	Rabbit IgG, kappa
Clone Name	TRPS1/7912R
Purity	Protein A/G affinity
UniProt	Q9UHF7
Localization	Nucleus
Applications	Immunohistochemistry (FFPE) : 1-2ug/ml for 30 min at RT
Limitations	This Tricho-rhino-phalangeal syndrome type I antibody is available for research use only.



IHC staining of FFPE human ovary tissue with TRPS1 antibody (clone TRPS1/7912R). Inset: PBS used in place of primary Ab (secondary Ab negative control). HIER: boil tissue sections in pH 9 10mM Tris with 1mM EDTA for 20 min and allow to cool before testing.



IHC staining of FFPE human breast carcinoma tissue with TRPS1 antibody (clone TRPS1/7912R). Strong nuclear staining using TRPS1/7912R mAb at 2ug/ml. HIER: boil tissue sections in pH 9 10mM Tris with 1mM EDTA for 20 min and allow to cool before testing.

Description

Transcriptional repressor. Binds specifically to GATA sequences and represses expression of GATA-regulated genes at selected sites and stages in vertebrate development. Regulates chondrocyte proliferation and differentiation. Executes multiple functions in proliferating chondrocytes, expanding the region of distal chondrocytes, activating proliferation in columnar cells and supporting the differentiation of columnar into hypertrophic chondrocytes. Ubiquitously expressed in the adult. Found in fetal brain, lung, kidney, liver, spleen and thymus. More highly expressed in androgen-dependent than in androgen-independent prostate cancer cells.

Application Notes

Optimal dilution of the Tricho-rhino-phalangeal syndrome type I antibody should be determined by the researcher.

Immunogen

A recombinant partial protein sequence (within amino acids 900-1100) from the human protein was used as the immunogen for the Tricho-rhino-phalangeal syndrome type I antibody.

Storage

Aliquot the Tricho-rhino-phalangeal syndrome type I antibody and store frozen at -20°C or colder. Avoid repeated freeze-thaw cycles.