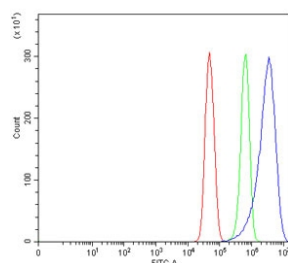


## TRAT1 Antibody / T-cell receptor-associated transmembrane adapter 1 (RQ7483)

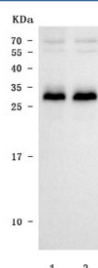
Catalog No.	Formulation	Size
RQ7483	0.5mg/ml if reconstituted with 0.2ml sterile DI water	100 ug

**Bulk quote request**

<b>Availability</b>	1-3 business days
<b>Species Reactivity</b>	Human
<b>Format</b>	Antigen affinity purified
<b>Clonality</b>	Polyclonal (rabbit origin)
<b>Isotype</b>	Rabbit IgG
<b>Purity</b>	Antigen affinity purified
<b>Buffer</b>	Lyophilized from 1X PBS with 2% Trehalose
<b>UniProt</b>	Q6PIZ9
<b>Applications</b>	Western Blot : 0.5-1ug/ml Flow Cytometry : 1-3ug/million cells Direct ELISA : 0.1-0.5ug/ml
<b>Limitations</b>	This TRAT1 antibody is available for research use only.



Flow cytometry testing of human U-251 cells with TRAT1 antibody at 1ug/million cells (blocked with goat sera); Red=cells alone, Green=isotype control, Blue= TRAT1 antibody.



Western blot testing of human 1) MOLT4 and 2) Jurkat cell lysate with TRAT1 antibody. Predicted molecular weight ~21 kDa, commonly observed at 21-30 kDa.

## Description

T-cell receptor-associated transmembrane adapter 1 is a protein that in humans is encoded by the TRAT1 gene. Predicted to enable transmembrane receptor protein tyrosine kinase adaptor activity. Acts upstream of or within negative regulation of receptor recycling; negative regulation of transport; and positive regulation of signal transduction. Located in centriolar satellite; mitotic spindle; and plasma membrane. Part of T cell receptor complex.

## Application Notes

Optimal dilution of the TRAT1 antibody should be determined by the researcher.

## Immunogen

E. coli-derived recombinant human protein (amino acids S25-N186) was used as the immunogen for the TRAT1 antibody.

## Storage

After reconstitution, the TRAT1 antibody can be stored for up to one month at 4°C. For long-term, aliquot and store at -20°C. Avoid repeated freezing and thawing.