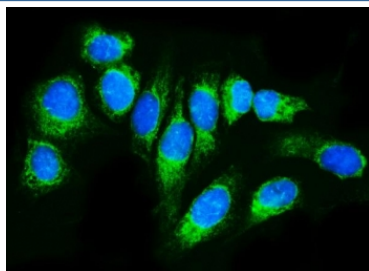


TRAP alpha Antibody / TRAPA / SSR1 (RQ6522)

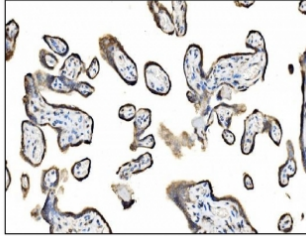
Catalog No.	Formulation	Size
RQ6522	0.5mg/ml if reconstituted with 0.2ml sterile DI water	100 ug

Bulk quote request

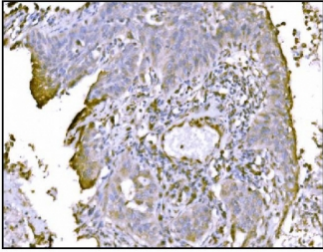
Availability	1-3 business days
Species Reactivity	Human, Mouse, Rat, Monkey
Format	Antigen affinity purified
Clonality	Polyclonal (rabbit origin)
Isotype	Rabbit IgG
Purity	Affinity purified
Buffer	Lyophilized from 1X PBS with 2% Trehalose
UniProt	P43307
Localization	Cytoplasmic
Applications	Western Blot : 1-2ug/ml Immunohistochemistry (FFPE) : 2-5ug/ml Immunofluorescence : 5ug/ml Flow Cytometry : 1-3ug/million cells Direct ELISA : 0.1-0.5ug/ml
Limitations	This TRAP alpha antibody is available for research use only.



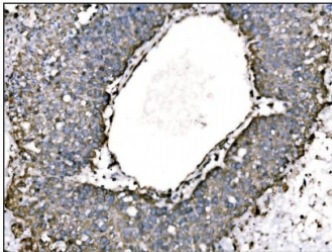
Immunofluorescent staining of FFPE human U-2 OS cells with TRAP alpha antibody (green) and DAPI nuclear stain (blue). HIER: steam section in pH6 citrate buffer for 20 min.



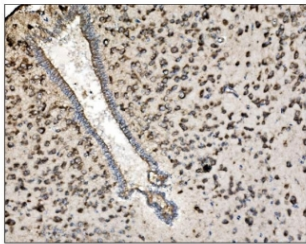
IHC staining of FFPE human placental tissue with TRAP alpha antibody. HIER: boil tissue sections in pH8 EDTA for 20 min and allow to cool before testing.



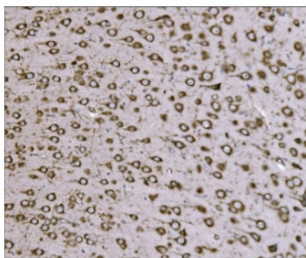
IHC staining of FFPE human lung cancer tissue with TRAP alpha antibody. HIER: boil tissue sections in pH8 EDTA for 20 min and allow to cool before testing.



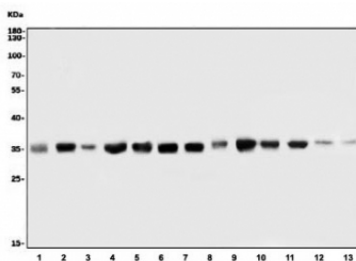
IHC staining of FFPE human liver cancer tissue with TRAP alpha antibody. HIER: boil tissue sections in pH8 EDTA for 20 min and allow to cool before testing.



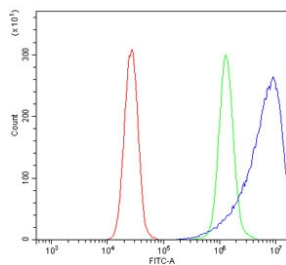
IHC staining of FFPE mouse brain tissue with TRAP alpha antibody. HIER: boil tissue sections in pH8 EDTA for 20 min and allow to cool before testing.



IHC staining of FFPE rat brain tissue with TRAP alpha antibody. HIER: boil tissue sections in pH8 EDTA for 20 min and allow to cool before testing.



Western blot testing of 1) human A431, 2) human HL60, 3) human T-47D, 4) human HepG2, 5) monkey COS-7, 6) human HEK293, 7) human K562, 8) human U937, 9) rat liver, 10) rat stomach, 11) rat PC-12, 12) mouse liver and 13) mouse stomach lysate with TRAP alpha antibody. Expected molecular weight ~34 kDa.



Flow cytometry testing of human K562 cells with TRAP alpha antibody at 1ug/million cells (blocked with goat sera); Red=cells alone, Green=isotype control, Blue= TRAP alpha antibody.

Description

Translocon-associated protein subunit alpha is a protein that in humans is encoded by the SSR1 gene. The signal sequence receptor (SSR) is a glycosylated endoplasmic reticulum (ER) membrane receptor associated with protein translocation across the ER membrane. The SSR consists of 2 subunits, a 34-kD glycoprotein encoded by this gene and a 22-kD glycoprotein. This gene generates several mRNA species as a result of complex alternative polyadenylation. This gene is unusual in that it utilizes arrays of polyA signal sequences that are mostly non-canonical. Multiple transcript variants encoding different isoforms have been found for this gene.

Application Notes

Optimal dilution of the TRAP alpha antibody should be determined by the researcher.

Immunogen

An E. coli-derived human protein (amino acids E53-E286) was used as the immunogen for the TRAP alpha antibody.

Storage

After reconstitution, the TRAP alpha antibody can be stored for up to one month at 4oC. For long-term, aliquot and store at -20oC. Avoid repeated freezing and thawing.