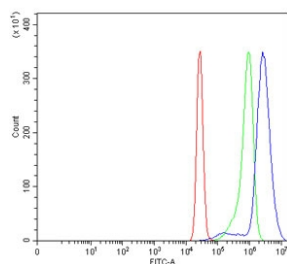


Transcription factor Sp6 Antibody / SP6 / KLF14 (RQ7015)

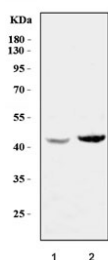
Catalog No.	Formulation	Size
RQ7015	0.5mg/ml if reconstituted with 0.2ml sterile DI water	100 ug

Bulk quote request

Availability	1-3 business days
Species Reactivity	Human
Format	Antigen affinity purified
Clonality	Polyclonal (rabbit origin)
Isotype	Rabbit IgG
Purity	Antigen affinity purified
Buffer	Lyophilized from 1X PBS with 2% Trehalose
UniProt	Q3SY56
Applications	Western Blot : 0.5-1 ug/ml Flow Cytometry : 1-3ug/million cells Direct ELISA : 0.1-0.5ug/ml
Limitations	This Transcription factor Sp6 antibody is available for research use only.



Flow cytometry testing of human K562 cells with Transcription factor Sp6 antibody at 1ug/million cells (blocked with goat sera); Red=cells alone, Green=isotype control, Blue=Transcription factor Sp6 antibody.



Western blot testing of human 1) Caco-2 and 2) RT4 cell lysate with Transcription factor Sp6 antibody. Predicted molecular weight ~40 kDa.

Description

SP6 belongs to a family of transcription factors that contain 3 classical zinc finger DNA-binding domains consisting of a zinc atom tetrahedrally coordinated by 2 cysteines and 2 histidines (C2H2 motif). These transcription factors bind to GC-rich sequences and related GT and CACCC boxes.

Application Notes

Optimal dilution of the Transcription factor Sp6 antibody should be determined by the researcher.

Immunogen

Recombinant human protein (amino acids H18-N376) was used as the immunogen for the Transcription factor Sp6 antibody.

Storage

After reconstitution, the Transcription factor Sp6 antibody can be stored for up to one month at 4oC. For long-term, aliquot and store at -20oC. Avoid repeated freezing and thawing.