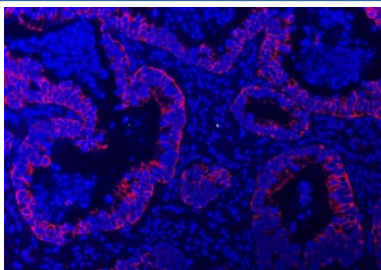


## TRAM1L1 Antibody / Translocating chain-associated membrane protein 1-like 1 (RQ7503)

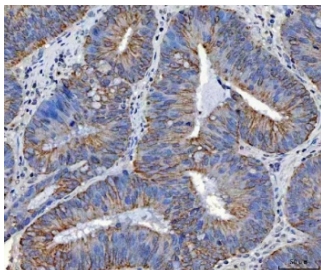
Catalog No.	Formulation	Size
RQ7503	0.5mg/ml if reconstituted with 0.2ml sterile DI water	100 ug

[Bulk quote request](#)

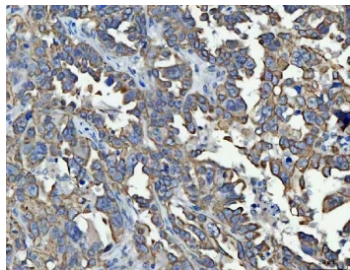
<b>Availability</b>	1-3 business days
<b>Species Reactivity</b>	Human
<b>Format</b>	Antigen affinity purified
<b>Clonality</b>	Polyclonal (rabbit origin)
<b>Isotype</b>	Rabbit IgG
<b>Purity</b>	Antigen affinity purified
<b>Buffer</b>	Lyophilized from 1X PBS with 2% Trehalose
<b>UniProt</b>	Q8N609
<b>Localization</b>	Cytoplasmic (ER)
<b>Applications</b>	Western Blot : 0.5-1ug/ml Immunohistochemistry (FFPE) : 2-5ug/ml Flow Cytometry : 1-3ug/million cells
<b>Limitations</b>	This TRAM1L1 antibody is available for research use only.



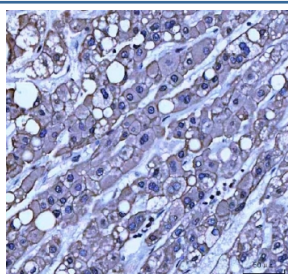
Immunofluorescent staining of FFPE human colorectal adenocarcinoma tissue with TRAM1L1 antibody (red) and DAPI nuclear stain (blue). HIER: steam section in pH8 EDTA buffer for 20 min.



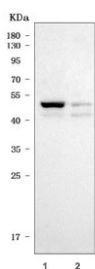
IHC staining of FFPE human colorectal adenocarcinoma tissue with TRAM1L1 antibody. HIER: boil tissue sections in pH8 EDTA for 20 min and allow to cool before testing.



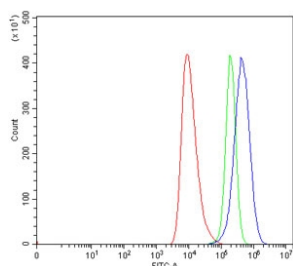
IHC staining of FFPE human ovarian cancer tissue with TRAM1L1 antibody. HIER: boil tissue sections in pH8 EDTA for 20 min and allow to cool before testing.



IHC staining of FFPE human liver cancer tissue with TRAM1L1 antibody. HIER: boil tissue sections in pH8 EDTA for 20 min and allow to cool before testing.



Western blot testing of human 1) T-47D and 2) U-2 OS cell lysate with TRAM1L1 antibody. Predicted molecular weight ~42 kDa.



Flow cytometry testing of human HEL cells with TRAM1L1 antibody at 1ug/million cells (blocked with goat sera); Red=cells alone, Green=isotype control, Blue= TRAM1L1 antibody.

## Description

Predicted to be involved in protein insertion into ER membrane. Predicted to be integral component of endoplasmic reticulum membrane.

## Application Notes

Optimal dilution of the TRAM1L1 antibody should be determined by the researcher.

## Immunogen

Amino acids LQRWVEDSNIQASCMKKK from the human protein were used as the immunogen for the TRAM1L1

antibody.

## Storage

After reconstitution, the TRAM1L1 antibody can be stored for up to one month at 4°C. For long-term, aliquot and store at -20°C. Avoid repeated freezing and thawing.