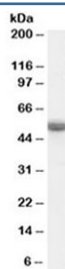


## TRAF2 Antibody (R34531)

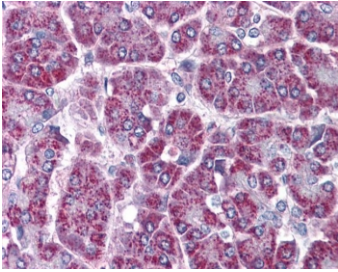
Catalog No.	Formulation	Size
R34531-100UG	0.5 mg/ml in 1X TBS, pH7.3, with 0.5% BSA (US sourced) and 0.02% sodium azide	100 ug

[Bulk quote request](#)

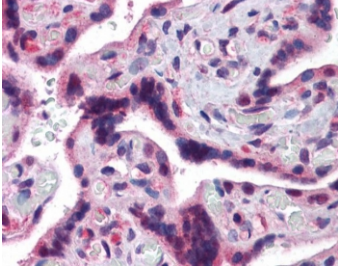
Availability	1-3 business days
Species Reactivity	Human
Predicted Reactivity	Cow, Dog, Mouse, Rat
Format	Antigen affinity purified
Clonality	Polyclonal (goat origin)
Isotype	Goat Ig
Purity	Antigen affinity
Gene ID	7186
Localization	Cytoplasmic
Applications	Western Blot : 0.1-1ug/ml Immunohistochemistry (FFPE) : 3-6ug/ml ELISA (peptide) LOD : 1:128000
Limitations	This TRAF2 antibody is available for research use only.



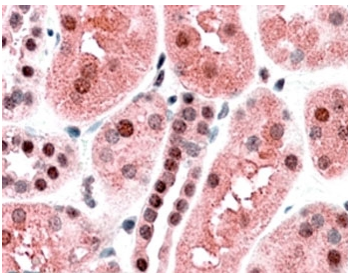
Western blot testing of human ovary lysate with TRAF2 antibody at 0.1ug/ml. Predicted molecular weight: ~55 kDa.



IHC staining of FFPE human pancreas with TRAF2 antibody at 3.8ug/ml. HIER: steamed with pH6 citrate buffer, AP-staining.



IHC staining of FFPE human placenta with TRAF2 antibody at 3.8ug/ml. HIER: steamed with pH6 citrate buffer, AP-staining.



IHC staining of FFPE human kidney with TRAF2 antibody at 3.8ug/ml. HIER: steamed with pH6 citrate buffer, AP-staining.

## Description

Additional name(s) for this target protein: TNF receptor-associated factor 2

## Application Notes

Optimal dilution of the TRAF2 antibody should be determined by the researcher.

## Immunogen

Amino acids KMEAKNSYVRDD were used as the immunogen for this TRAF2 antibody.

## Storage

Aliquot and store the TRAF2 antibody at -20oC.