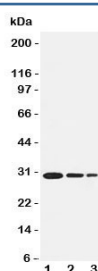


## TRAF1 Antibody (R31113)

Catalog No.	Formulation	Size
R31113	0.5mg/ml if reconstituted with 0.2ml sterile DI water	100 ug

**Bulk quote request**

<b>Availability</b>	1-3 business days
<b>Species Reactivity</b>	Human, Mouse
<b>Format</b>	Antigen affinity purified
<b>Clonality</b>	Polyclonal (rabbit origin)
<b>Isotype</b>	Rabbit IgG
<b>Purity</b>	Antigen affinity
<b>Buffer</b>	Lyophilized from 1X PBS with 2.5% BSA and 0.025% sodium azide/thimerosal
<b>UniProt</b>	Q13077
<b>Applications</b>	Western Blot : 0.5-1ug/ml
<b>Limitations</b>	This TRAF1 antibody is available for research use only.



Western blot testing of TRAF1 antibody and recombinant human protein, 30.6KD with tag; Lane 1: 5ng; 2: 2.5ng; 3: 1.25ng

## Description

TNF Receptor-Associated Factor 1, also called EBI6, is a protein that in humans is encoded by the TRAF1 gene. The protein encoded by this gene is a member of the TNF receptor (TNFR) associated factor (TRAF) protein family. Siemiński et al.(1997) used fluorescence in situ hybridization to map the gene to 9q33-q34. Mosialos et al.(1995) found that LMP1, the EBV-transforming protein, specifically associates with LAP1 (TRAF3) or TRAF1 in B lymphoblasts. LMP1 expression redirects LAP1 and TRAF1 from scattered cytoplasmic structures to LMP1 plasma membrane patches. Both LAP1 and TRAF1 associated with the cytoplasmic domain of p80/TNFR2 in vivo.

## Application Notes

The stated application concentrations are suggested starting amounts. Titration of the TRAF1 antibody may be required due to differences in protocols and secondary/substrate sensitivity.

## **Immunogen**

An amino acid sequence from the middle region of human TNF Receptor-Associated Factor 1 (HSQLDRERILSLEQR) was used as the immunogen for this TRAF1 antibody.

## **Storage**

After reconstitution, the TRAF1 antibody can be stored for up to one month at 4°C. For long-term, aliquot and store at -20°C. Avoid repeated freezing and thawing.