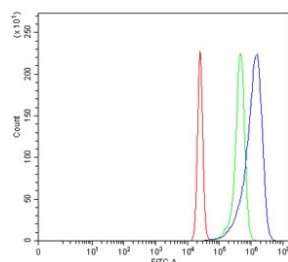


## TPI1 Antibody / Triosephosphate isomerase (RQ6810)

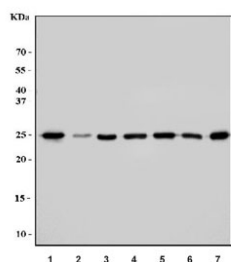
Catalog No.	Formulation	Size
RQ6810	0.5mg/ml if reconstituted with 0.2ml sterile DI water	100 ug

**Bulk quote request**

<b>Availability</b>	1-3 business days
<b>Species Reactivity</b>	Human, Mouse, Rat
<b>Format</b>	Antigen affinity purified
<b>Clonality</b>	Polyclonal (rabbit origin)
<b>Isotype</b>	Rabbit IgG
<b>Purity</b>	Antigen affinity purified
<b>Buffer</b>	Lyophilized from 1X PBS with 2% Trehalose
<b>UniProt</b>	P60174
<b>Applications</b>	Western Blot : 1-2ug/ml Flow Cytometry : 1-3ug/million cells Direct ELISA : 0.1-0.5ug/ml
<b>Limitations</b>	This TPI1 antibody is available for research use only.



Flow cytometry testing of human K562 cells with TPI1 antibody at 1ug/million cells (blocked with goat sera); Red=cells alone, Green=isotype control, Blue= TPI1 antibody.



Western blot testing of 1) human HeLa, 2) human 293T, 3) human HepG2, 4) rat liver, 5) rat kidney, 6) mouse liver and 7) mouse kidney tissue lysate with TPI1 antibody. Predicted molecular weight ~26 kDa.

## Description

Triosephosphate isomerase is an enzyme that in humans is encoded by the TPI1 gene. This gene encodes an enzyme, consisting of two identical proteins, which catalyzes the isomerization of glyceraldehydes 3-phosphate (G3P) and dihydroxy-acetone phosphate (DHAP) in glycolysis and gluconeogenesis. Mutations in this gene are associated with triosephosphate isomerase deficiency. Pseudogenes have been identified on chromosomes 1, 4, 6 and 7. Alternative splicing results in multiple transcript variants.

## Application Notes

Optimal dilution of the TPI1 antibody should be determined by the researcher.

## Immunogen

Recombinant human protein (amino acids M1-Q286) was used as the immunogen for the TPI1 antibody.

## Storage

After reconstitution, the TPI1 antibody can be stored for up to one month at 4oC. For long-term, aliquot and store at -20oC. Avoid repeated freezing and thawing.