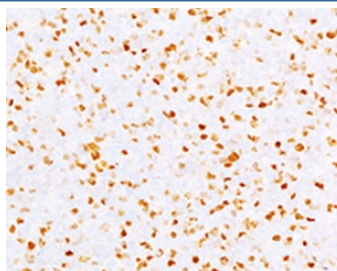


Topoisomerase II alpha Antibody / TOP2A [clone TPM2A-2] (V7234)

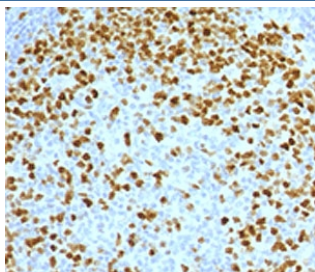
Catalog No.	Formulation	Size
V7234-100UG	0.2 mg/ml in 1X PBS with 0.1 mg/ml BSA (US sourced) and 0.05% sodium azide	100 ug
V7234-20UG	0.2 mg/ml in 1X PBS with 0.1 mg/ml BSA (US sourced) and 0.05% sodium azide	20 ug
V7234SAF-100UG	1 mg/ml in 1X PBS; BSA free, sodium azide free	100 ug

[Bulk quote request](#)

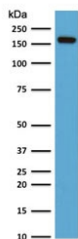
Species Reactivity	Human
Format	Purified
Clonality	Monoclonal (mouse origin)
Isotype	Mouse IgG2b, kappa
Clone Name	TPM2A-2
Purity	Protein G affinity chromatography
Gene ID	7153
Localization	Nuclear
Applications	Immunofluorescence : 1-2ug/ml Western Blot : 1-2ug/ml Immunohistochemistry (FFPE) : 1-2ug/ml (1)
Limitations	This Topoisomerase II alpha antibody is available for research use only.



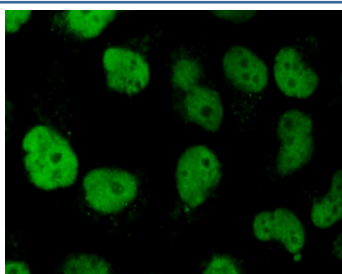
IHC testing of FFPE human bladder carcinoma with Topoisomerase II alpha antibody (clone TPM2A-2).



IHC testing of FFPE human tonsil with Topoisomerase II alpha antibody (clone TPM2A-2).



Western blot testing of human HeLa cell lysate with Topoisomerase II alpha antibody (clone TPM2A-2). Expected molecular weight ~174 kDa.



Immunofluorescent staining of PFA-fixed human HeLa cells with Topoisomerase II alpha antibody (clone TPM2A-2).

Description

This mAb recognizes a 170kDa protein which is identified as Topoisomerase IIa, and shows no cross-reaction with Topoisomerase IIb or I. Topo IIa plays important roles in synthesis and transcription of DNA as well as chromosomal segregation during mitosis. It is reported to be a sensitive and specific marker of late S-, G2- & M-phases in transformed and developmentally regulated normal cells. Topo IIa is also implicated in drug resistance of tumor cells.

Application Notes

The concentration stated for each application is a general starting point. Variations in protocols, secondaries and substrates may require the Topoisomerase II alpha antibody to be titrated up or down for optimal performance.

1. Staining of FFPE tissue requires boiling sections in pH 9 10mM Tris with 1mM EDTA for 10-20 min followed by cooling at RT for 20 min.

Immunogen

Human recombinant partial protein (amino acids 1352-1493) was used as the immunogen for this Topoisomerase II alpha antibody.

Storage

Store the Topoisomerase II alpha antibody at 2-8°C (with azide) or aliquot and store at -20°C or colder (without azide).

References (1)

