

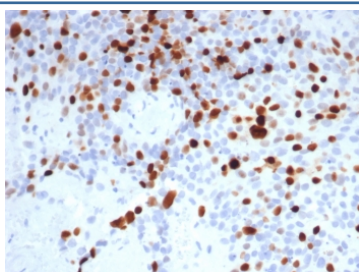
Topoisomerase II alpha Antibody / TOP2A [clone TOP2A/8103R] (V4495)

Catalog No.	Formulation	Size
V4495-100UG	0.2 mg/ml in 1X PBS with 0.1 mg/ml BSA (US sourced), 0.05% sodium azide	100 ug
V4495-20UG	0.2 mg/ml in 1X PBS with 0.1 mg/ml BSA (US sourced), 0.05% sodium azide	20 ug
V4495SAF-100UG	1 mg/ml in 1X PBS; BSA free, sodium azide free	100 ug

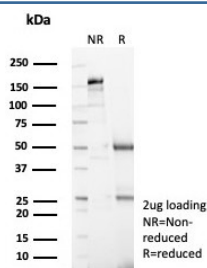
Recombinant **RABBIT MONOCLONAL**

[Bulk quote request](#)

Availability	1-3 business days
Species Reactivity	Human
Format	Purified
Clonality	Recombinant Rabbit Monoclonal
Isotype	Rabbit IgG, kappa
Clone Name	TOP2A/8103R
Purity	Protein A/G affinity
UniProt	P11388
Localization	Nucleus
Applications	Immunohistochemistry (FFPE) : 1-2ug/ml for 30 minutes at RT
Limitations	This Topoisomerase II alpha antibody is available for research use only.



IHC staining of FFPE human lymph node tissue with Topoisomerase II alpha antibody (clone TOP2A/8103R). HIER: boil tissue sections in pH 9 10mM Tris with 1mM EDTA for 20 min and allow to cool before testing.



SDS-PAGE analysis of purified, BSA-free Topoisomerase II alpha antibody (clone TOP2A/8103R) as confirmation of integrity and purity.

Description

The topoisomerase II-Alpha isoform is a 170kDa nuclear protein and plays an important role in DNA synthesis and RNA transcription, as well as chromosomal segregation during mitosis. Topoisomerase II-Alpha is reported to be a sensitive and specific marker of late S-, G2- & M-phases in transformed and developmentally regulated normal cells, and has been shown to be over-expressed in many human cancers. Decreased expression of Topoisomerase II-Alpha is the predominant mechanism of resistance to several chemotherapeutic agents.

Application Notes

Optimal dilution of the Topoisomerase II alpha antibody should be determined by the researcher.

Immunogen

A recombinant partial protein sequence (within amino acids 1431-1531) from the human protein was used as the immunogen for the Topoisomerase II alpha antibody.

Storage

Aliquot the Topoisomerase II alpha antibody and store frozen at -20oC or colder. Avoid repeated freeze-thaw cycles.