

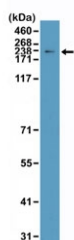
Topoisomerase II alpha Antibody / TOP2A [clone RM394] (R20410)

Catalog No.	Formulation	Size
R20410-0.1ML	Antibody in PBS with 50% glycerol, 1% BSA and 0.09% sodium azide	100 ul

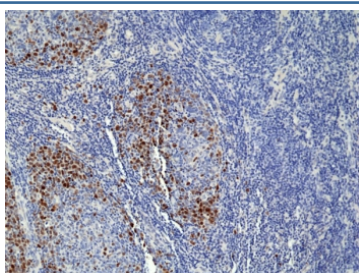
Recombinant **RABBIT MONOCLONAL**

[Bulk quote request](#)

Availability	1-3 business days
Species Reactivity	Human
Format	Purified
Clonality	Recombinant Rabbit Monoclonal
Isotype	Rabbit IgG
Clone Name	RM394
Purity	Protein A purified from animal origin-free supernatant
UniProt	P11388
Localization	Nuclear
Applications	Immunohistochemistry (FFPE) : 1:100-1:2000 Western Blot : 1:1000-1:2000
Limitations	This recombinant Topoisomerase II alpha antibody is available for research use only.



Western blot testing of human HeLa cell lysate with recombinant Topoisomerase II alpha antibody at 1:2000 dilution. Predicted molecular weight ~174 kDa.



IHC staining of FFPE human tonsil tissue with recombinant Topoisomerase II alpha antibody at 1:100.

Description

This antibody reacts to human Topoisomerase II alpha / TOP2a.

Application Notes

The stated application concentrations are suggested starting points. Titration of the recombinant Topoisomerase II alpha antibody may be required due to differences in protocols and secondary/substrate sensitivity.

Immunogen

A peptide corresponding to human TOP2a was used as the immunogen for the recombinant Topoisomerase II alpha antibody.

Storage

Store the recombinant Topoisomerase II alpha antibody at -20oC.