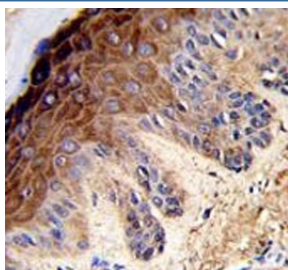


Topoisomerase II alpha Antibody / TOP2A (F55028)

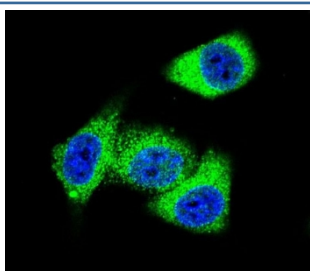
Catalog No.	Formulation	Size
F55028-0.4ML	In 1X PBS, pH 7.4, with 0.09% sodium azide	0.4 ml
F55028-0.08ML	In 1X PBS, pH 7.4, with 0.09% sodium azide	0.08 ml

Bulk quote request

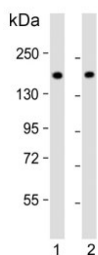
Availability	1-3 business days
Species Reactivity	Human
Format	Purified
Clonality	Polyclonal (rabbit origin)
Isotype	Rabbit Ig
Purity	Antigen affinity purified
UniProt	P11388
Localization	Nuclear, cytoplasmic
Applications	Immunofluorescence : 1:10-1:50 Immunohistochemistry (FFPE) : 1:50-1:100 Western Blot : 1:500-1:1000
Limitations	This Topoisomerase II alpha antibody is available for research use only.



IHC testing of FFPE human skin tissue with Topoisomerase II alpha antibody. HIER: steam section in pH6 citrate buffer for 20 min and allow to cool prior to staining.



Immunofluorescent staining of human HeLa cells with Topoisomerase II alpha antibody (green) and DAPI nuclear stain (blue).



Western blot testing of human 1) Jurkat and 2) K562 cell lysate with Topoisomerase II alpha antibody. Predicted molecular weight ~174 kDa.



Western blot testing of human A375 cell lysate with Topoisomerase II alpha antibody. Predicted molecular weight ~174 kDa.

Description

TOP2A encodes a DNA topoisomerase, an enzyme that controls and alters the topologic states of DNA during transcription. This nuclear enzyme is involved in processes such as chromosome condensation, chromatid separation, and the relief of torsional stress that occurs during DNA transcription and replication. It catalyzes the transient breaking and rejoining of two strands of duplex DNA which allows the strands to pass through one another, thus altering the topology of DNA.

Application Notes

The stated application concentrations are suggested starting points. Titration of the Topoisomerase II alpha antibody may be required due to differences in protocols and secondary/substrate sensitivity.

Immunogen

A portion of amino acids 1167-1196 from the human protein was used as the immunogen for the Topoisomerase II alpha antibody.

Storage

Aliquot the Topoisomerase II alpha antibody and store frozen at -20oC or colder. Avoid repeated freeze-thaw cycles.