

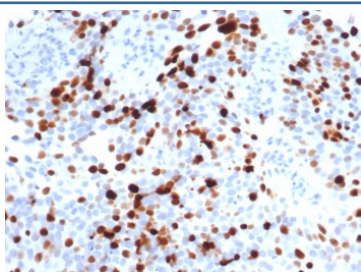
Topo IIa Antibody / Topoisomerase II alpha [clone TOP2A/7148R] (V4496)

Catalog No.	Formulation	Size
V4496-100UG	0.2 mg/ml in 1X PBS with 0.1 mg/ml BSA (US sourced), 0.05% sodium azide	100 ug
V4496-20UG	0.2 mg/ml in 1X PBS with 0.1 mg/ml BSA (US sourced), 0.05% sodium azide	20 ug
V4496SAF-100UG	1 mg/ml in 1X PBS; BSA free, sodium azide free	100 ug

Recombinant **RABBIT MONOCLONAL**

[Bulk quote request](#)

Availability	1-3 business days
Species Reactivity	Human
Format	Purified
Clonality	Recombinant Rabbit Monoclonal
Isotype	Rabbit IgG, kappa
Clone Name	TOP2A/7148R
Purity	Protein A/G affinity
UniProt	P11388
Localization	Nucleus
Applications	Immunohistochemistry (FFPE) : 1-2ug/ml for 30 minutes at RT
Limitations	This Topo IIa antibody is available for research use only.



IHC staining of FFPE human lymph node tissue with Topo IIa antibody (clone TOP2A/7148R). HIER: boil tissue sections in pH 9 10mM Tris with 1mM EDTA for 20 min and allow to cool before testing.

Description

The topoisomerase II-Alpha isoform is a 170kDa nuclear protein and plays an important role in DNA synthesis and RNA transcription, as well as chromosomal segregation during mitosis. Topoisomerase II-Alpha is reported to be a sensitive and specific marker of late S-, G2- & M-phases in transformed and developmentally regulated normal cells, and has been shown to be over-expressed in many human cancers. Decreased expression of Topoisomerase II-Alpha is the

predominant mechanism of resistance to several chemotherapeutic agents.

Application Notes

Optimal dilution of the Topo IIa antibody should be determined by the researcher.

Immunogen

A synthetic peptide corresponding to human Topoisomerase II alpha protein (within amino acids 1431-1531) was used as the immunogen for the Topo IIa antibody.

Storage

Aliquot the Topo IIa antibody and store frozen at -20oC or colder. Avoid repeated freeze-thaw cycles.