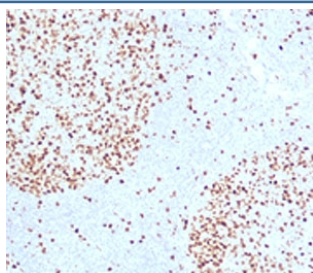


TOP2A Antibody / Topoisomerase II alpha [clone TPM2A-1] (V7245)

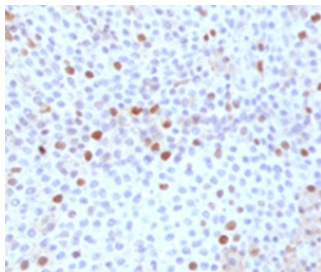
Catalog No.	Formulation	Size
V7245-100UG	0.2 mg/ml in 1X PBS with 0.1 mg/ml BSA (US sourced) and 0.05% sodium azide	100 ug
V7245-20UG	0.2 mg/ml in 1X PBS with 0.1 mg/ml BSA (US sourced) and 0.05% sodium azide	20 ug
V7245SAF-100UG	1 mg/ml in 1X PBS; BSA free, sodium azide free	100 ug

[Bulk quote request](#)

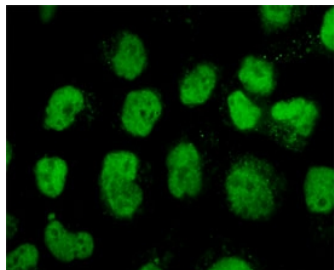
Species Reactivity	Human
Format	Purified
Clonality	Monoclonal (mouse origin)
Isotype	Mouse IgG2b, kappa
Clone Name	TPM2A-1
Purity	Protein G affinity chromatography
UniProt	P11388
Gene ID	7153
Localization	Nuclear
Applications	Immunofluorescence : 1-2ug/ml Western Blot : 1-2ug/ml Immunohistochemistry (FFPE) : 1-2ug/ml (1)
Limitations	This TOP2A antibody is available for research use only.



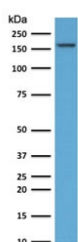
IHC testing of FFPE human tonsil with TOP2A antibody (clone TPM2A-1).



IHC testing of FFPE human bladder carcinoma with TOP2A antibody (clone TPM2A-1).



Immunofluorescent staining of PFA-fixed human HeLa cells with TOP2A antibody (clone TPM2A-1).



Western blot testing of human HeLa cell lysate with TOP2A antibody (clone TPM2A-1).
Expected molecular weight ~174 kDa.

Description

This mAb recognizes a 170kDa protein which is identified as Topoisomerase IIa, and shows no cross-reaction with Topoisomerase IIb or I. Topo IIa plays important roles in synthesis and transcription of DNA as well as chromosomal segregation during mitosis. It is reported to be a sensitive and specific marker of late S-, G2- & M-phases in transformed and developmentally regulated normal cells. Topo IIa is also implicated in drug resistance of tumor cells.

Application Notes

The concentration stated for each application is a general starting point. Variations in protocols, secondaries and substrates may require the TOP2A antibody to be titrated up or down for optimal performance.

1. Staining of FFPE tissue requires boiling sections in pH 9 10mM Tris with 1mM EDTA for 10-20 min followed by cooling at RT for 20 min.

Immunogen

Human recombinant partial protein (amino acids 1352-1493) was used as the immunogen for this TOP2A antibody.

Storage

Store the TOP2A antibody at 2-8°C (with azide) or aliquot and store at -20°C or colder (without azide).

References (1)

