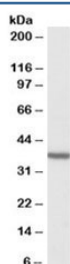


TOMM40 Antibody (R34311)

Catalog No.	Formulation	Size
R34311-100UG	0.5 mg/ml in 1X TBS, pH7.3, with 0.5% BSA (US sourced) and 0.02% sodium azide	100 ug

[Bulk quote request](#)

Availability	1-3 business days
Species Reactivity	Human
Predicted Reactivity	Cow, Dog, Mouse, Rat
Format	Antigen affinity purified
Clonality	Polyclonal (goat origin)
Isotype	Goat Ig
Purity	Antigen affinity
Gene ID	10452
Applications	Western Blot : 1-3ug/ml ELISA (peptide) LOD : 1:16000
Limitations	This TOMM40 antibody is available for research use only.



Western blot testing of human frontal cortex lysate with TOMM40 antibody at 2ug/ml.
Predicted/observed molecular weight: ~37kDa.

Description

Additional name(s) for this target protein: Translocase of outer mitochondrial membrane 40

Application Notes

Optimal dilution of the TOMM40 antibody should be determined by the researcher.

Immunogen

Amino acids HTVALSTIGESNYH were used as the immunogen for this TOMM40 antibody.

Storage

Aliquot and store the TOMM40 antibody at -20oC.