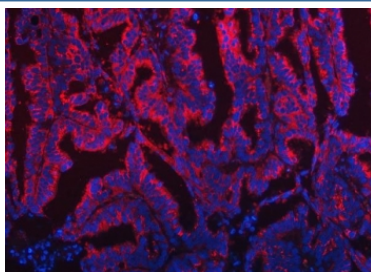


TOM1L1 Antibody / TOM1-like protein 1 (RQ7577)

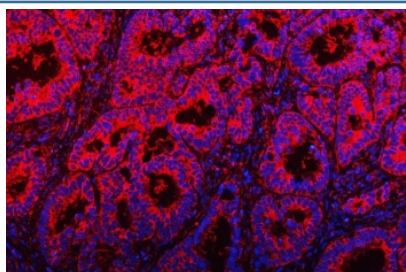
Catalog No.	Formulation	Size
RQ7577	0.5mg/ml if reconstituted with 0.2ml sterile DI water	100 ug

Bulk quote request

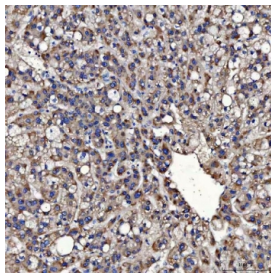
Availability	1-3 business days
Species Reactivity	Human, Mouse, Rat
Format	Antigen affinity purified
Clonality	Polyclonal (rabbit origin)
Isotype	Rabbit IgG
Purity	Antigen affinity purified
Buffer	Lyophilized from 1X PBS with 2% Trehalose
UniProt	O75674
Applications	Western Blot : 0.5-1ug/ml Immunohistochemistry (FFPE) : 2-5ug/ml Flow Cytometry : 1-3ug/million cells Immunofluorescence : 5ug/ml Direct ELISA : 0.1-0.5ug/ml
Limitations	This TOM1L1 antibody is available for research use only.



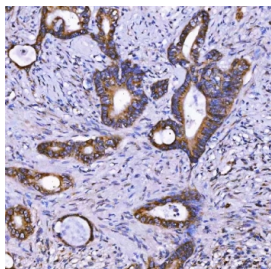
Immunofluorescent staining of FFPE human ovarian cancer tissue with TOM1L1 antibody (red) and DAPI nuclear stain (blue). HIER: steam section in pH8 EDTA buffer for 20 min.



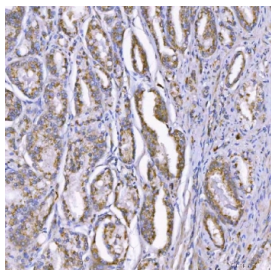
Immunofluorescent staining of FFPE human rectal cancer tissue with TOM1L1 antibody (red) and DAPI nuclear stain (blue). HIER: steam section in pH8 EDTA buffer for 20 min.



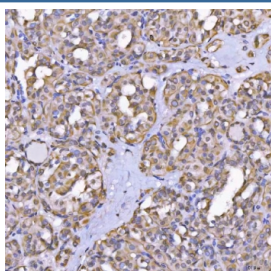
IHC staining of FFPE human liver cancer tissue with TOM1L1 antibody. HIER: boil tissue sections in pH8 EDTA for 20 min and allow to cool before testing.



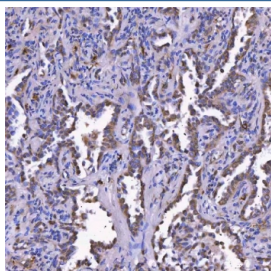
IHC staining of FFPE human colon cancer tissue with TOM1L1 antibody. HIER: boil tissue sections in pH8 EDTA for 20 min and allow to cool before testing.



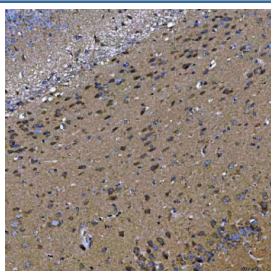
IHC staining of FFPE human prostate adenocarcinoma tissue with TOM1L1 antibody. HIER: boil tissue sections in pH8 EDTA for 20 min and allow to cool before testing.



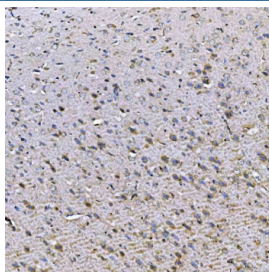
IHC staining of FFPE human thyroid cancer tissue with TOM1L1 antibody. HIER: boil tissue sections in pH8 EDTA for 20 min and allow to cool before testing.



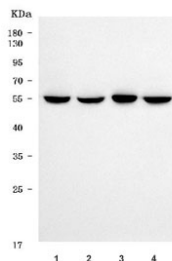
IHC staining of FFPE human lung cancer tissue with TOM1L1 antibody. HIER: boil tissue sections in pH8 EDTA for 20 min and allow to cool before testing.



IHC staining of FFPE mouse brain tissue with TOM1L1 antibody. HIER: boil tissue sections in pH8 EDTA for 20 min and allow to cool before testing.



IHC staining of FFPE rat brain tissue with TOM1L1 antibody. HIER: boil tissue sections in pH8 EDTA for 20 min and allow to cool before testing.



Western blot testing of human 1) HeLa, 2) 293T, 3) T-47D and 4) HEL cell lysate with TOM1L1 antibody. Predicted molecular weight ~53 kDa.

Description

TOM1-like protein 1 is a protein that in humans is encoded by the TOM1L1 gene. Enables clathrin binding activity and protein kinase binding activity. Involved in negative regulation of mitotic nuclear division; positive regulation of protein phosphorylation; and signal transduction. Located in cytosol and endosome.

Application Notes

Optimal dilution of the TOM1L1 antibody should be determined by the researcher.

Immunogen

E. coli-derived recombinant human protein (amino acids D9-D448) was used as the immunogen for the TOM1L1 antibody.

Storage

After reconstitution, the TOM1L1 antibody can be stored for up to one month at 4°C. For long-term, aliquot and store at -20°C. Avoid repeated freezing and thawing.